

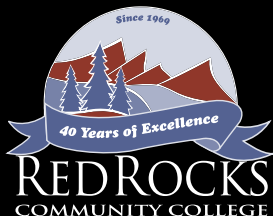


2009-2010

# FOUNDATION ANNUAL REPORT

---

Red Rocks Community College



## 1969

Classes begin at 1209 Quail St. Official college name was Community College of Denver–West Campus.

The buildings provided 45,000 square feet of modest accommodations when first quarter classes began September 22 for 780 students. By the second quarter, enrollment had grown to more than 1,000 students.

In early 1969, General Services Administration designated 140 acres of land at West Sixth Avenue and Arbutus Drive as surplus and thus donated the land to the State of Colorado for a new college campus. The land had been used as a gunnery range for the former Remington Arms plant.

## 1976-1981

College enrollment soared through the mid 1970s, bolstered by returning Vietnam veterans. In 1976 more than 2,800 vets were enrolled as full-time students.

Academic emphasis at this time was on occupational courses, which attracted about 80 percent of the enrollment. In 1981 an increased number of educational programs became available to Red Rocks students as a result of a cooperative agreement with the Warren Occupational Technical Center. Now called WarrenTech, this school is a Jefferson County technical center for high school and adult students. RRCC students are able to take vocational coursework at WarrenTech and earn degrees and certificates in programs such as auto collision repair and culinary arts through this partnership.

## 1979

Slye Dog Saloon opens on campus. Student Activities operated the saloon serving 3.2% beer from 1979 to 1982

## 1983

Campus name is changed to Red Rocks Community College

## 1987

Sale of alcohol banned on campus.

Transfer agreement signed with Colorado School of Mines, making this the first four-year institution to align with Red Rocks Community College. This landmark agreement guaranteed admission as a junior to the Colorado School of Mines.

Red Rocks Community College had two brief seasons of intramural football and played other western region community colleges. The Colts played from 1971–1972, and the Rebels played from 1988–1989.

# RRCC CELEBRATES 40 YEARS OF EXCELLENCE!

## 1970

RRCC conducts five-week refresher courses for registered nurses on campus and at St. Anthony Central.

RRCC now delivers courses in healthcare such as medical office technology, phlebotomy, nurse aide, holistic health, medical imaging, and physician assistant.

## 1972

RRCC becomes accredited by the Higher Learning Commission of the North Central Association of Colleges and Schools.

## 1971-1975

Ground was broken for the college's sprawling brick and concrete facility in December 1971. The first phase called for construction of the industrial building and the east wing, which together provided 117,000 square feet of instructional and administrative space.

The west wing and the bridge connecting the east wing were completed in fall 1975. The West Campus was one of three campuses that made up CCD. The North Campus (Front Range) opened in 1968, the West Campus (RRCC) in 1969 and the Central Campus (Denver) in 1970.

Ten years later the college added the Environmental Training Center, a freestanding brick structure located down the hill from the main campus building.

## 1973

Construction is complete on current location at 13300 West Sixth Avenue.

## 1983-1985

The early 1980s saw a profound change in the student body. As Vietnam veterans' educational benefits ran out and enrollments slid, the 80s became a time to focus on the changing needs of the student body. A majority of the post Baby Boomers sought business-related courses. Accounting, data processing, and management courses became very popular.

RRCC graduates expressed the need for courses that transferred into bachelor degree programs. The roots of RRCC's core curriculum go back to this period of time. Now, students who have taken prescribed classes can transfer from Red Rocks to Colorado's four-year public institutions.

In 1985, the Community College of Denver System was dissolved, and Red Rocks became an independent institution under the governance of the State Board of Community College and Occupational Education.

## 1989

RRCC marks 20th Anniversary and dedicates new sign along Sixth Avenue Service Road.

## 1994

Renovation begins at the Lakewood campus, including a library expansion, theater-style classroom, computer labs, art gallery, and student center.

Remo the Red Fox is established as RRCC's mascot.

## 1993

The RRCC Foundation, a not-for-profit organization that provides financial support to the college and to its students, is established and holds first board meeting. As of 2010, the Foundation has awarded more than \$2.6 million in scholarships to 2,800 students.

## 1990

Arvada campus opens at 5370 Wadsworth with three classrooms and a computer lab. Record enrollments prompted a 2000-square foot addition in 1992.

The University of Colorado at Denver and Red Rocks sign Articulation Transfer Agreement.

## 1996

A time capsule is filled and buried at the base of the flag pole at RRCC's main entrance to celebrate the past 30 years and the upcoming millennium.

## 1997-2001

Encouraged by student demand and community support for a permanent college facility in Arvada, Red Rocks worked with community leaders to develop plans for constructing a new campus on 15 acres near 58th Avenue and Kipling Street on what was known as the Ridge Home site.

In June 1997, the campus moved to a temporary location adjacent to the new site, and for nearly three years, staff and faculty operated in five trailers while the new building was being completed in 2000. The campus featured the latest in technological advances such as internet courses, telecourses, and an online library. Also in 2000, the Fire Science department received a Program of Excellence grant, enabling them to build a multimillion dollar expansion on the west end of the Lakewood campus.

## 2006-2009

Bonfils Blood Center presented RRCC with a "30 Years of Saving Lives" award in 2006 in recognition of nearly 5,800 units of blood collected since 1976.

In 2007, RTD began the FasTracks rapid transit program when they broke ground for the West Corridor in May and started construction activities in April 2008. The West corridor will be the first section to be completed in the FasTracks program, opening in early 2013.

RRCC has an annual enrollment of more than 12,000 and is one of the fastest growing institutions of higher education in the state.

The college is nationally recognized for its leadership in several areas, including one of the largest OSHA training centers in the country. RRCC is a leader in programs that serve diverse populations, such as the Gateway program which assists offenders in reconnecting with their careers, and a Green Jobs for Veterans program.

## 2008

RRCC earned a "2008 Governor's Excellence in Energy" award for the energy technology program.

Student enrollment reaches 12,000 per year. RRCC's first fall semester in 1969 had 780 students.

## 2005

Gateway program begins, bringing educational opportunities and a second chance to offenders.

## 1969 - 2009

## 1990-1996

In 1990 at the urging of community leaders in Denver's northwest metro area, RRCC established a satellite campus in Arvada. Red Rocks Arvada Education and Training Center opened its doors for the first seven-week fast-track semester in October 1990. Housed in a former bank building at 5370 Wadsworth Boulevard, the leased facility initially included three classrooms, administrative space, and a computer lab with 26 work stations.

In 1992, the Department of Labor/OSHA selected RRCC as one of four training centers in the U.S. to offer OSHA training. The Rocky Mountain Education Center (RMEC) is one of two Department of Labor's authorized OSHA Training Institutes in Region VIII which consists of CO, WY, MT, SD, ND, and UT. The mission of the RMEC has expanded over the years from environmental, safety, and health training to include all professional workforce development training.

In late 1994, plans were finalized for more than \$13 million of construction and remodeling of RRCC's Lakewood campus. The projects, which were completed by August 1996, included a library expansion, a Learning and Resource Center (LARC), new classrooms and computer labs, an art gallery, a community room, and a Student Center.

In 1996, Red Rocks Community College launched its first Internet home page.

## 2001

Red Rocks Community College-Arvada campus at 5420 Miller St. The campus is home to the Medical Imaging program, Wind Energy Technology, Process Technology, and Industrial Sciences and Operations. Several courses as well as state-guaranteed general education courses are offered at the campus.

## 2002-2005

A poll by the Jefferson County School district in 2003 revealed that RRCC was the number one choice for higher education among graduating Jeffco seniors. RRCC introduced a new scholarship geared toward high school seniors which paid tuition for up to nine credit hours.

RRCC opened the Radiation Technology Lab at the Arvada campus in 2004. The state-of-the-art facility simulated a hospital setting with two energized labs, an x-ray development room, and several "phantoms" which simulated human tissue. This year also marked the largest graduating class to date, with 505 associate's degrees and 818 certificates awarded. The youngest graduate was 16, the oldest was 73.

In 2005, in response to the manufacturing industry's request for a more educated workforce, the Industrial Science and Operations Department (ISOD) was created. ISOD prepares students for careers such as oil and gas production, refining, chemical manufacturing, alternative energy production, electric power generation, and water reclamation.

## 2010

RRCC Foundation hosted its 40<sup>th</sup> anniversary gala event, "Get in the Game" at the Ameristar Resort in Black Hawk, CO. The event was a fantastic success, netting \$101,000 toward scholarships, far exceeding the original goal of \$40,000.

## 2009

RRCC earned a "City of Lakewood Mayor's Sustainability" award for the energy technology program and the Green Campus Initiative.

RRCC celebrates its 40th Anniversary with a Woodstock-inspired party at the RRCC multi-purpose field/pavilion. The RRCC band, "Staff Infection" entertained participants.

## Happy Anniversary

# RED ROCKS COMMUNITY COLLEGE!!

### Our 40<sup>th</sup> year was filled with celebrations

of our years of service to Jefferson, Park, Clear Creek and Gilpin counties, the wonderful partnerships we have been fortunate to form, and the many, many students we have served.

In addition to recognizing the milestone of 40 years in our community, we also observed another significant milestone – the 2009-2010 academic year brought us the most students the college has ever educated in one year with an enrollment increase of twenty percent. Accommodating more than 9,000 students each semester kept faculty and staff busy and the parking lots full to overflowing! The sheer number of students who chose to enroll at RRCC last year validates the enormous role the local community college plays in meeting the educational needs of our constituents.

It was a big year for the Foundation as well – our wonderful donors supported our students and institution with more than \$775,000 in donations, exceeding budgeted expectations by \$150,000. Additionally, our investment advisors also outperformed expectations by more than doubling the amount budgeted for investment returns.

Though the future of public higher education in Colorado remains unclear, those of us who work or provide volunteer leadership at Red Rocks know what a critical service the college provides. We hope you will find the articles and information included in this annual report interesting and inspiring. The gratitude we have for all of our loyal donors and supporters is immense. Your advocacy – personally, economically, socially – is what makes Red Rocks Community College the invaluable resource we all work so hard to preserve.

Sincerely,



President, Red Rocks Community College



President, Red Rocks Foundation Board of Directors

## FOUNDATION BOARD

The Foundation is governed by a board of up to 30 community and business leaders.

Dr. Agneta Albinsson

Kristen M. Anderson

Robert E. Barber

Kevin J. Bervik

John G. Brant

Tim Campbell

Shelley Cook

Michael Coughlin

Jim Dascalos

Dr. David Donaldson

Dr. Michele Haney

Jacquie Haughton

Dan Leach

Thomas W. Lemcke

Tom Menk

Aldo G. Notarianni

Skip Olson

Dr. Melinda O'Rourke

Robert Rogers

Bob Short

Dr. John Trefny

Shirleen Tucker

Denise Waddell

Jim Whitfield

Paulann Doane, Executive Director



Dr. C. Michele Haney



Kristen Anderson

## Foundation brings on

# DIRECTOR OF DEVELOPMENT



Ron Slinger

### The Foundation is excited

to announce the addition of a Director of Development to the fundraising team. The new position was created in an effort to increase public-private partnerships that will help the College to respond to the funding challenges that are being felt today and are anticipated to continue

into the future. The position will focus on expanding community, business, and industry partnerships that will ensure that Red Rocks Community College continues to have resources available to meet the education and training needs of the community.

After successfully working with the Foundation to support the 40<sup>th</sup> Anniversary Event, Ron Slinger joined the Foundation team full-time as the new Director of Development. After many years of running a very successful small business, Ron is returning to higher education, where he began his career working for Bluffton University in Ohio. He has a distinguished track record of public service as a Gilpin County RE-1 School Board Member, Central City Council Member, Gilpin County

Commissioner, and most recently Central City Mayor. Ron has also served on numerous boards helping to raise well over \$1 million dollars toward both capital and program needs. Professionally, he served as Director of Development for the Governor's Energy Office during Governor Bill Ritter's first year in office. His outgoing

personality is contagious as he is quick with both a smile and laugh. He is an avid golfer, although he will point out, "you would never know by my score." When he isn't golfing, he loves to spend time with his wife, Karen, and children, Natasha, Nicholas and Katelyn.

*His outgoing personality is contagious as he is quick with both a smile and laugh.*

## Welcome

# NEW BOARD MEMBERS

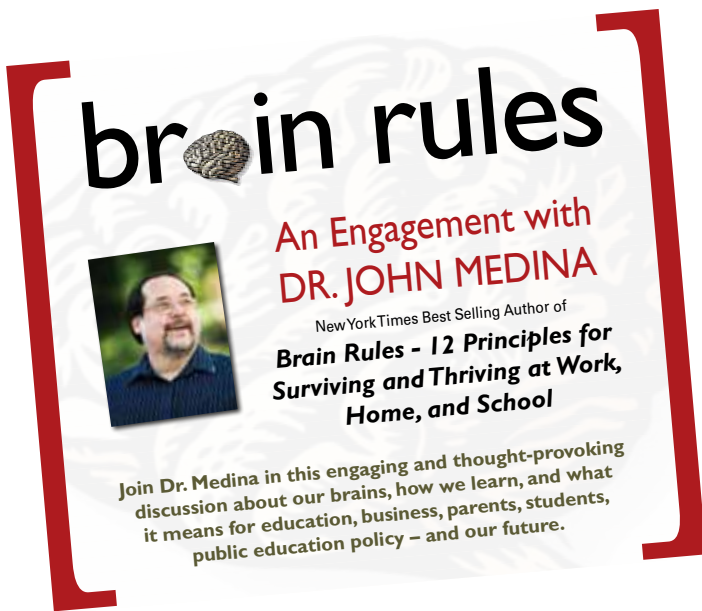
**Melinda O'Rourke** is an eye physician and surgeon who has been practicing in the community for more than two decades. She is the owner of Northwest Eye Center, P.C. and its cosmetic branch, Northwest Laser Skincare located in Wheat Ridge. Throughout her professional career she has prioritized volunteerism, serving as a doctor for Vision Health International, which provides medical and surgical eye care to Latin America, and as a volunteer physician for the Stout Street Eye Clinic which provides medical eye care for the homeless. Dr. O'Rourke began her education at the Community College of Denver and recognizes the value community colleges play in the educational pathway for students. The RRCC Foundation is excited to have her as a new member and welcomes her to the Board.

**Robert Rogers** will be representing W.W. Grainger on the Foundation Board of Directors. Since 2006, Grainger has partnered with the Foundation through their national Tools for Tomorrow program, which provides a \$2,000 scholarship annually to two deserving students in their final year of a career and technical education degree program. Grainger has expanded their commitment to the college in recent years through contributions of both funding and talent. Most recently, the college was presented with a check for \$20,000 to be used for the enhancement of RRCC's educational programs and Mr. Rogers, branch manager of the Denver affiliate of W.W. Grainger Inc., has joined the board for a three-year term. Welcome Robert and many thanks to Grainger, whose partnership has and will continue to make, great things possible for RRCC and its students!

RRCC has

# INNOVATION ON THE BRAIN

The past year was filled with **innovation** stemming from a recent publication, Brain Rules, by John Medina, PhD. In his book, Dr. Medina identifies twelve principles, which he terms “Brain Rules”, that present easy to understand truths about how the human brain functions. He then takes each Brain Rule and discusses its implications for optimizing human potential in educational, work and personal settings.



The book became the focus of parallel faculty reading groups held at RRCC and the Colorado School of Mines and quickly captured the interest of faculty across both campuses.

A culminating event with the author was planned and two seminars were held with the Dr. Medina last fall, sponsored by the Leach Family Donor Advised Fund held at the Community First Foundation and coordinated by the RRCC Foundation with support from the Colorado School of Mines. The seminars exposed the audience more deeply to individual Brain Rules and provided an expanded conversation about how each may inform teaching and learning. With more than 300 individuals at each session, the seminars were well-attended by faculty and

*The symposiums expanded interest in brain science and its implications for teaching and learning.*

staff from K-12 and post-secondary institutions and by interested community members. The symposiums expanded interest in brain science and its implications for teaching and learning. Incorporating findings from neuroscience, RRCC will launch an institute for teaching and learning in fall 2010.

Thanks to a three year, \$300,000 grant from the Community First Foundation, made possible through the Leach Family Donor Advised Fund, RRCC will develop the Red Rocks Community College Institute for Sustainability in Education (RISE). As an institute within the College, RISE will link sustainability, education and community through programs and opportunities that bring together scientific research in neuroscience, educators, and business/industry professionals. Faculty professional development will be at the core of RISE's programs, beginning with the establishment of the RISE Fellowship Program. The Program will convene educators from RRCC, Jeffco Public Schools and Colorado School of Mines. The cohort of educators will engage in a year-long program where they will study leading research in brain science and explore its



implications for instructional methodologies that will enhance the study and pursuit of sustainable disciplines and educational levels.

RRCC is proud to welcome Liz Cox who will oversee the implementation of the RISE program as its director. Liz brings over 15 years of experience in educational leadership and administration to RRCC. Most recently she held the position of executive director for the Korbel School of International Studies at University of Denver. RISE is the first in a series of initiatives envisioned by the Colorado Partnership for a Sustainable Future, a collective consisting of representatives from RRCC, Colorado School of Mines, Jeffco Public Schools, and the business community. CPSF is working to create a continuum of innovative teaching/learning programs that will foster an understanding, at all age levels, of the critical role that sustainability plays in our future.

# STATEMENTS OF FINANCIAL POSITION

June 30, 2010 and 2009

## ASSETS

	<b>2010</b>	<b>2009</b>
Cash and cash equivalents	\$480,172	\$371,127
Accounts receivable, related party	51,842	—
Pledges receivable	32,100	6,758
Loans receivable, students	2,650	6,081
Prepaid expenses	2,166	2,202
Investments	3,088,234	2,672,235
Art and donor recognition walls	17,758	17,758
Beneficial interest in charitable remainder trust	429,500	421,700
<b>Total Assets</b>	<b>\$4,104,422</b>	<b>\$3,497,861</b>

## LIABILITY

Accounts payable	\$ 39,594	\$ 42,148
------------------	-----------	-----------

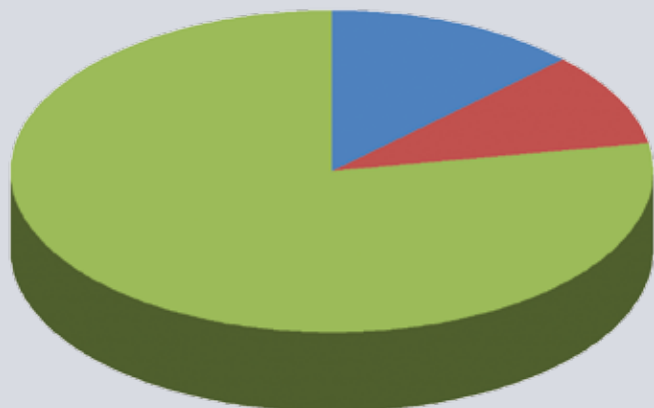
## NET ASSETS

Unrestricted	509,402	301,273
Temporarily restricted	1,085,731	858,816
Permanently restricted	2,469,695	2,295,624
<b>Total Net Assets</b>	<b>4,064,828</b>	<b>3,455,713</b>
<b>Total Liabilities and Net Assets</b>	<b>\$4,104,422</b>	<b>\$3,497,861</b>



### 2009-2010 Revenue

<span style="color: blue;">●</span> Donations	\$770,953.00	54.12%
<span style="color: red;">●</span> Contributed Services	\$173,829.00	12.20%
<span style="color: green;">●</span> Investment Income	\$479,696.00	33.68%



### 2009-2010 Expenses

<span style="color: blue;">●</span> Fundraising	\$105,113.00	12.89%
<span style="color: red;">●</span> General and Administrative	\$76,802.00	9.42%
<span style="color: green;">●</span> Program	\$633,448.00	77.69%

# GET IN THE GAME

with *Fabulous*



## The Red Rocks Community College Foundation's "Get in the Game" 40th anniversary gala was held on June 5th, 2010.

The fundraiser was the culminating event to a year-long celebration of the College's 40th anniversary as an institution of higher education. Throughout the year, the College hosted a variety of activities beginning with "Party on the Rocks," a community picnic with live music, food and lots of fun! The Foundation's event was more of a formal affair, held off campus in Gilpin County, a community served by Red Rocks Community College.

## The Foundation's gala, was a fantastic success,

netting \$101,000 toward scholarships, far exceeding the original goal of \$40,000! Held at the Ameristar Resort in Black Hawk, CO to a back drop of "vintage Vegas" complete with cocktails and crooners, the event was attended by Colorado dignitaries such as Dr. Nancy McCallin, CCCS president; Ed Perlmutter, US Congressman; Cliff Richardson, former RRCC President and current CCCS Vice President; and former Speaker of the House, Andrew Romanoff. Numerous local dignitaries were also in attendance: Lakewood Mayor, Bob Murphy; Arvada Mayor, Bob Frie; Arvada Mayor Pro Tem, Bob Dyer; Arvada Council Member Marc Williams; Arvada Council Member and RRCC Foundation Board Member, Shelley Cook; Gilpin County Commissioners Jeannie Nicholson and Buddy Schmalz; Jeffco School Board President, Dave Thomas; Jeffco Superintendent, Dr. Cindy Stevenson; Former Colorado School of the Mines President and current RRCC Foundation Board Member, Dr. John Trefny; Central City Mayor, Ron Slinger; Central City Mayor Pro Tem, Bob Spain; Central City Council Members, Ron Engels, Bob Giancola and Tom Reilly. They were joined by more than two hundred friends and supporters of the College and Foundation.

## For some, the evening began

in Central City with a private tour of the Central City Opera House, the Teller House and a performance in Williams Stables by members of the 2010 cast of Central City Opera. The Executive Director of the Gilpin Historical Society addressed the guests, bringing the theater's history to life as they sat in the seats occupied by Opera patrons over the last seventy-eight years. The guests then took a walking tour of the adjacent Teller House Hotel where President Ulysses S. Grant once stayed. After a sparkling reception provided by 240 Union restaurant of Lakewood and an intimate performance in Williams Stables, guests headed to Black Hawk and the Ameristar where they were greeted by Ol' Blue Eyes serenading attendees as they arrived.

For everyone, the main event was a celebration of forty years of excellence in education, but perhaps more importantly, the evening was focused on the community partners that made the past forty years such as success. While many community partners have contributed to the programs and opportunities provided by the College through the years, each decade was marked by a significant partnership that has endured.

The honorees were Jeffco Public Schools (1970s), Colorado School of Mines (1980s), City of Arvada (1990s), and Suncor Energy (2000s). Former Senator Al Meiklejohn Jr. was also honored for his lifelong commitment to education and his support of Red Rocks Community College over the years. Senator Meiklejohn accepted the honor, but passed away just prior to the event. On his behalf, two of his four children, Scott Meiklejohn and Shelley Dressler attended the event. Immediately following

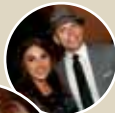


their acceptance of RRCC's recognition of their father, they presented Dr. Michele Haney, President of RRCC, with a check for \$25,000 from their father's estate. The audience was brought to their feet in an enthusiastic and moving round of applause. The funds will be added to the existing Al and Mindy Meiklejohn Endowment, established in 1996 to provide scholarships to students.

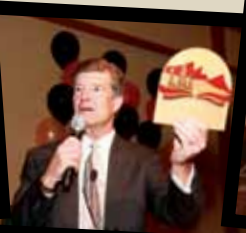
**Each community partner was presented with a small token of appreciation,**

a wooden plaque constructed by RRCC's Fine woodworking department. The presentation was made jointly by Dr. Haney and by a recent RRCC student and Foundation scholarship recipient, who has a connection to the community partner and wanted to share their educational journey with the audience.

**The evening closed** with a very lively live auction with many wonderful choices to bid on such as stays at striking locations such as Cape Cod, Maui, and Mexico. Also available were items hand crafted by faculty of the RRCC Fine Woodworking Department. The biggest splash of the evening was the offering of an exclusively hosted dinner for ten provided by 240 Union at the Sculptured House in Genesee. With the bidding heading to \$11,000, the owner of the Sculptured House, Michael Dunahay, generously allowed it to be sold twice!! Two very generous and happy bidders both picked up this "one of a kind" item while the real winner of the night was RRCC and our students. Many thanks to the donors, guests, and volunteers who made the 40th Anniversary Gala an enormous success!



*Auction locations (from top to bottom): Sculptured House, Maui, Cape Cod, Mexico*





## 1970 Jeffco Public Schools

Since 1973, WarrenTech Career and Technical High School for Jeffco Public Schools has been located adjacent to Red Rocks Community College's Lakewood campus. Jeffco Public Schools and Red Rocks Community College, together, have created a Lifelong Learning Campus in Lakewood that serves K-12 and adult learners alike. Today, 80 percent of Warren Tech's 33 programs offer RRCC credit. Similarly, RRCC students can enroll in degree and certificate programs such as Automotive Tech and the Rocky Mountain Chef's of Colorado apprenticeship program offered through WarrenTech.

The partnership with WarrenTech is just one example of the collaborative spirit that exists between Jeffco Public Schools and RRCC. The ongoing relationship has allowed the institutions to leverage resources and increase opportunities for students resulting in innovative and effective educational programs for the Jefferson County community.

Jeffco Public Schools has a mission to provide a quality education that prepares all children for a successful future. It is the largest district in the State of Colorado, serving more than 80,000 students. Approximately 30 percent of students enrolling at RRCC each semester are from Jeffco high schools.



Ryan Rasmussen, Dr. Michele Haney, RRCC President & Dr. Cindy Stevenson, Jeffco Superintendent

## Ryan Rasmussen



**Presenter, Jeffco Public Schools**  
*Daniels Opportunity Award 2009-2010*

Ryan was a Jeffco Public Schools student since third grade and graduated in the second graduating class from Conifer High School. He began his college career at Red Rocks Community College in the spring 2009. After serving in the United States Marine Corps for six years, then working for the Union Pacific Railroad as a civilian for three years, he knew it was time for something more, and to him that meant higher education. With the RRCC Foundation scholarship he was able to attend school full-time and as a result received his Associate of Arts degree in a year and a half and graduated May 2010!

During his three tours in Iraq he saw many of his fellow Marines suffer the stresses of war and often served as a support for his companions. Now he intends to pursue a career as a therapist and family counselor where he can build on his natural talents. He has been accepted to Columbia University and will leave his native Colorado

for New York to begin his work toward his bachelor's with a double major in Psychology and Philosophy fall 2010. Ultimately, Ryan intends to obtain his Doctorate.



## 1980 Colorado School of Mines

For more than 20 years, Red Rocks Community College and Colorado School of Mines have held a guaranteed transfer agreement that provides students a pathway directly into Mines' engineering bachelor's degree program as juniors.

Since 1988 the transfer agreement with Mines has demanded high standards from RRCC courses and students. Working with Mines faculty to develop courses, the Red Rocks faculty has been challenged to set the bar high for their students. Enjoying the challenge, RRCC faculty consistently encourage students to reach higher and as a result, transfer students from RRCC make up approximately 30% of all Mines transfer students (more than from any other institution) and have a track record of continuing academic success. The partnership with Mines has resulted in a pathway for both students and faculty to excel.

Colorado School of Mines is a public research university devoted to engineering and applied science. It has the highest admissions standards of any public university in Colorado and among the highest of any public university in the U.S.



Dr. Steven Castillo, CSM Provost, Carla Sanchez, & Dr. Michele Haney

## Carla Sanchez



**Presenter, Colorado School of Mines**  
*Kingdom Enlightenment Scholarship 2008-2009,  
Martin Family Foundation Scholarship 2009-2010*

Carla began her college career in 2007. Before coming to RRCC, she was incarcerated for crimes associated with drugs and gang activity. While in jail she made a commitment to turn her life around and begin her journey of atonement. After being released from prison she had to rebuild from scratch. Once she reconciled with her family, she enrolled at RRCC. Having a passion and talent in the sciences, Carla began work toward her associate's degree. The Foundation scholarships provided much needed financial support as she pursued her educational goals.

Carla has been accepted to Colorado School of Mines and beginning fall 2010 she will pursue her Bachelor's degree in Geology/Geological Engineering. She plans to continue on to her Master's degree in Geo Chemistry with a projected graduation date in 2013. Carla dreams of doing an internship with Jefferson County Soil Conservation and then working for the USGS. Ultimately, she intends to use her skills and talent to engage in development work in Sub Saharan Africa.



## 1990 City of Arvada

The 90s were marked by the establishment of a satellite RRCC campus in the City of Arvada. Thanks to residents and community leaders dedicated to education and progress, the City of Arvada worked with RRCC to develop the Red Rocks Arvada Education and Training Center. In 1990 the first semester courses were offered at a leased facility located on Wadsworth Blvd. Encouraged by student demand and community support, the college and the city developed plans for construction of a permanent facility. The City of Arvada contributed \$1,000,000 to the approximately \$5,000,000 construction project, resulting in the RRCC Arvada campus located at 5420 Miller Street. Today, known for its innovative scheduling and welcoming setting, the campus has state-of-the-art "smart" classrooms and offers a variety of courses from Anthropology to Speech. It is also home to the College's Radiologic Technology program and the Industrial Sciences Operations department.

She came to RRCC in 2007, a single mom ready to make a change. She knew that education was going to be the key to a more stable and rewarding future, "I've made good friends, vital contacts and have an amazing support system at RRCC. I feel that I am now more capable than ever of fulfilling my role as a single mother because of my education here. Struggling to make ends meet is no longer an option for us." The scholarships she received enabled her to reduce

her work hours and make time for her classes. Through her studies and student employment in the RRCC Marketing and Communications Department, she has used her talents to support various community non-profit agencies, helping them create media pieces for various events and initiatives. Colinda designed all the print materials for the 40th Anniversary event!



Colinda Chance, Dr. Michele Haney, & Bob Frie, Mayor of Arvada

Colinda has been hired at RRCC's Marketing and Communications department on a temporary contract. She will also continue to pursue her freelance role as a graphic designer, working toward building her own small business. She currently lives in Arvada just a mile away from the RRCC Campus and each day it reminds her of the difference her education has made, and the support she found at Red Rocks Community College to reach her dreams.

## Colinda Chance

**Presenter, City of Arvada**

*Mathews Family Scholarship 2007-2008, Martin Family Scholarship 2008-2009, Rolling Hills Scholarship 2009-2010*

Colinda graduated with her Associate of Applied Science degree in Graphic Design with an emphasis in print media in May 2010.



## 2000 Suncor Energy

Suncor Energy has worked with Red Rocks Community College since 2004, providing input to course curriculum and offering employees as instructors. Suncor has also helped with Career Days and interview skills workshops. In addition, a total of \$350,000 in contributions from Suncor over the past five years has funded scholarships, equipment and training labs, including a new dedicated distributive control training room and simulator software.

The College recognizes its relationship with Suncor as the cornerstone of its process operations and industrial maintenance program. Thanks to Suncor's community investment, the College can provide students with comprehensive preparation for well-paying employment in the process and manufacturing industries throughout the metro Denver area.

Suncor's operations in the United States include a refinery and product distribution terminals in Commerce City, Colorado, pipeline operations that stretch between Wyoming and Denver, and retail assets in Colorado that are operated under the Shell and Phillips 66 brands.

## Jeremy Hutaff

**Presenter, Suncor Energy**

*Suncor scholarship 2009-2010*

Jeremy began exploring his life-long interests in engineering and science through his coursework at RRCC in 2005. As he continued in his engineering track courses, he knew that he wanted something that was more hands-on. Already working in the process operations field and enjoying it, he started searching for the types of courses industry leaders were recommending, which led him to RRCC's Process Technology program. Having received his Associate of Art degree from RRCC in 2008, Jeremy continued his studies through the Process Technology program and will be completing his Associate of Applied Science in Process Technology in 2010. As a father and husband he has had to negotiate a family-work-school balance that at times has proved challenging, but with the support of the Foundation scholarship the balance was a little easier to reach.

After completing his AAS, Jeremy will pursue his Bachelor's degree in business through Regis University. He intends to continue working in the energy operations field.

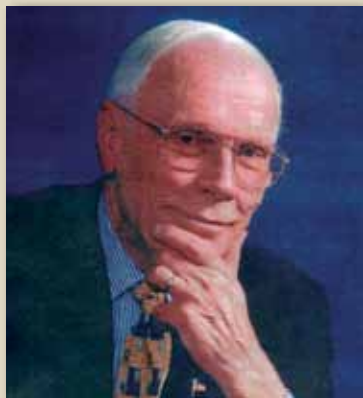


Jeremy Hutaff, Dr. Michele Haney, & Gary White, Director of Operations





## Senator Al Meiklejohn (1923-2010)



Al Meiklejohn 1923-2010

A lifelong resident of metro Denver, Alvin Meiklejohn, Jr. attended, and later spent much of his life advocating for, public schools, first as a school board member and later as a state senator. "Education is vital to everything," stated Senator Meiklejohn in a 1996 interview.

Senator Meiklejohn had a long and distinguished history of public service in support of education starting when he was elected to the Jefferson County Board of Education in 1971 for a six-year term. Four years of this term he was President of the Board. He was elected to the Colorado State Senate for the first time in 1976 and retired in December, 1996. As he neared retirement, he was honored by the City of Arvada and Red Rocks Community College through the establishment of a scholarship fund bearing his name. The fund was permanently endowed to ensure that his legacy would always support deserving students wishing to pursue an education. In addition, the City commissioned a bronze relief from Artist Ken Ball, which adorns the entrance of the RRCC Arvada Campus. During his work as a

senator he pushed for public school reform and higher teacher salaries, as he believed that education was the key to a successful life.

Red Rocks Community College and its Foundation were honored to have Senator Meiklejohn's support, wisdom and leadership for over 10 years as a Foundation Board Member and RRCC advocate and planned to publicly recognize him during the 40<sup>th</sup> Anniversary celebration for his lifetime of commitment to education. While he agreed to accept the honor, he passed away prior to the event. His son, Scott Meiklejohn and his daughter, Shelley Dressler attended the 40<sup>th</sup> Anniversary gala and accepted the honor on their father's behalf. Immediately following the presentation, they presented Dr. Haney with a \$25,000 check from their father's estate. The funds will be added to the Al and Mindy Meiklejohn Endowment held by the RRCC Foundation.



Dr. Michele Haney, Scott Meiklejohn, & Shelley Dressler



## Yarrow Spitzfaden

**Presenter, City of Arvada**

*Mathews Family Scholarship 2008-2009*

Yarrow graduated in May 2010 graduated with an Associate of Applied Science degree and three certificates in Water Quality Management. While pursuing her interest in Environmental Science during her studies at RRCC, she also shared her passion for dance with the College as the president of the Dance Club for three semesters. Yarrow was named as a Rising Star – an award that recognizes two students from each



of the Colorado Community College System's schools - for her leadership and involvement in campus activities. Home schooled kindergarten through 12th grade, Yarrow has always known the value of education. Twenty-two years ago, Senator Al Meiklejohn and two legislative colleagues sponsored Senate Bill 56, which set parameters for homeschooling and resulted in thousands of students receiving a unique educational experience in cooperation with the State of Colorado.

Yarrow plans to work internationally to address water quality issues. She intends to use her AAS degree to gain experience and explore the options the water quality field holds so she can decide on where she wants to focus her bachelor's degree.

# DONORS

The Red Rocks Community College Foundation is grateful to the many donors and friends who have given their support during the 2009-2010 academic year. Every effort has been made to create a comprehensive list of supporters. If your name is missing or incorrect, please contact us at 303-914-6425 so that we may correct the error.

## ENDOWMENT FUNDS

### Robert and Margaret Barber Family Foundation Scholarship Endowment

Robert and Margaret Barber

### Matthew Scott Daniels Memorial Scholarship Endowment

Ron and Sonia Daniels  
Family and Friends of Matthew Scott Daniels

### Hazelrigg Family Scholarship Endowment

Charles and Luanne Hazelrigg

### "Swede" Johnson Memorial Scholarship Endowment

240 Union Restaurant

Kristen Anderson  
Rob and Paulann Doane  
Golden Software, Inc.  
Lynn Engel  
Robert and Dru Short  
State Farm Companies Foundation

### Elissa Notarianni-Ditto Scholarship Endowment

Aldo and Peggine Notarianni

### Barber Nichols, Inc. Scholarship Endowment

Barber Nichols, Inc.

### Al and Mindy Meiklejohn Scholarship Endowment

Estate of Al and Mindy Meiklejohn

### Donna Remley Memorial Scholarship Endowment

Jeff Remley  
Stacy Roe  
John and Ruth Wengrovius

### Cliff Richardson Endowment

Rob and Paulann Doane  
Cliff and Terrie Richardson

### Theodore C. Sandquist Scholarship Endowment

Ted and Deb Sandquist

### John and Yasuko Shimizu Scholarship Endowment

John and Barbara Brant  
Yasuko Shimizu

## PROGRAM SPECIFIC FUNDS

### Afghanistan Girls School

Steve Kaye  
Donna Merriman

### Children's Center @ Red Rocks

Beverly Brayden  
Jason Dabit  
Joanna Fry  
Noel and Kathryn Hammer  
Janet Hill  
McDaniel Consulting, LLC  
Niki Nolles  
William and Lydia Walsh  
WellPoint Associate Giving Campaign  
JoElen Zgut

### Classroom and Instructional Equipment Fund

William Haas  
Grainger Foundation

### Emergency Loan Fund

The Freda T. Roof Memorial Scholarship Fund

### Fine Woodworking, Friends of The Shop

Anonymous Friend  
Anonymous Friend, via Network for Good  
Linda Armour

Denny Brown and Ann Oglesby  
James and Diane Barry  
DFA Construction  
Julie Dike  
Faculty, Friends and Students of the  
Fine Woodworking Department  
Erin Fay  
Sean Gillespie  
Karen Kemerling  
Michael Laine  
Michael Paquin  
Jason and Karin Price  
Rand Richards  
Patrick Shannon

### Gateway Program

The Denver Foundation

### GLBT Resource Center

Amy Braziller

### Industrial Science and Operations Program

Suncor Energy, Inc.

### International Students Fund

Anonymous Friend

### Leach Sustainability Fund

Community First Foundation  
The Leach Family Donor Advised Fund

### Music Department

Roger and Stephanie Berg Oram  
Mike and Joanne Colburn

### Physician Assistant Program

Anonymous Friend  
Christa Dobbs  
Ivor Garlick  
Mark and Margaret Ippolito  
Jim Keller  
Vernon Lee  
Debra Nickell  
Steven O'Dell  
Pediatric Associates of Ft. Collins LLC  
Kari Schoenwald  
Sommerville Family Health

### Red Rocks Institute for Sustainability and Education (RISE)

Community First Foundation  
The Leach Family Donor Advised Fund

### Books for Beautification

RRCC Classified Council

### RRCC Foundation Teaching Chair Program

Kristen Anderson  
Kevin and Michelle Bervik  
Shelley Cook  
David Donaldson and Anne McLean  
Michele Haney  
Steve Kaye  
Skip and Laurie Olson  
John and Sharon Trefny  
Scott and Shirleen Tucker  
Wells Fargo Community Support Campaign

### RRCC Memorial Garden

Anonymous Friend

### Theater Fund

Lisa Cavalli  
Darwin and Claire Davidson  
Kevin Edwardson

Pamela Jamruszka-Mencher  
Terry and Linda Stevinson  
William and Lydia Walsh

## SCHOLARSHIP FUNDS

### Karen Julia Anderson Memorial Scholarship

Linda Allen  
John Anderson  
Lewis and Cheryl Cox  
City of Black Hawk  
Chris and Kathleen Curtin  
Ed Eichhorn  
Stan Eigsti  
Carole McCormick  
Dwight and Phyllis Rider  
Deborah Wray

### ABS Foundation Scholarship

American Building Supply Foundation, Inc.

### AmeriCorps Scholarship

AmeriCorps  
Nancy Carlson  
Julie Dike  
Colleen Morris

### Arvada-Wheat Ridge Service Ambassadors for Youth Program

Deanna Alderman  
Carl and Jean Almquist  
Arvada Fire Protection District  
Arvada Jefferson Kiwanis  
Arvada Presbyterian Women  
Arvada Rotary Club  
Denise Anselmo-Heter  
Asunta Enterprises, Inc.  
Alan and Susan Ball  
J.S. Bachelder  
Frank and Cheryl Barone, Jr.  
Michael Barone  
Richard and Shirley Beals  
Edwin and Nancy Bentzen  
Kent and Amy Blevins  
Judith Brna  
Lori Burns  
Cheryl Busch  
Cristina Caamano  
Joan Campbell  
Shannon Carbone  
Citizens' Police Academy - Arvada Alumni  
Robert and Virginia Cellars  
Clear Creek Optimist Club  
Steven Close  
Carroll and Judy Cowell  
Linda Crook  
Dave Traina Installations, LLC  
Louis and Angela Daurio  
David and Karen Dechant  
Diane Drobnick  
Dana Easter  
Robert and Rachelle Fifer  
Joel and Janis Folk  
Barbara Fox  
Robert and Julie Gibbs  
Edmund and Patricia Gillett  
Raymond and Jacqueline Gilligan  
Ernest and Norma Giron  
Rhonda Gorenz-Macy  
Jenny Geyer  
C.D. and Carolyn Govan, III

Thomas and Hazel Hartbarger  
David and Diane Hegeman  
Michael and Sandra Herald  
Daniel Hershberger  
Jerry and Mary Jelinek  
Jefferson Foundation  
Gina Jimenez  
Kiwanis Club of Arvada  
Kiwanis Club of Lakeside  
Kenneth and Corinne Koehler  
Harold Kuczwar  
Lake Arbor Optimist Club  
Jeffrey Liddick  
John and Shron Lobus  
Edward and Alice Mally  
Paul Markov  
Beverly Medlock  
Darrell and Deborah Millage  
Mile Hi Property, LLC  
J.D. and Beth Myers  
Gene and Zelda Neher  
Erin Nichols  
Lila Nigh  
Orin and Lynda Lee Nobbe  
Michael and Carolyn Oldham  
Optimist Club of Wheat Ridge  
Eli Pacheco  
Deborah Porreco  
Mary Posiviata  
Dana Powell  
Douglas and Megara Pullen  
Mark Randall  
Donna Reed  
William and Mary Ross  
Charles and Sue Runge  
Leticia Sara  
Jo Schofield  
Stephen and Debra Selle  
Olgajean Shelton  
Ronald and Barbara Sloan  
Philip and Karen Smith  
Donna Spears-Clausen  
Kathy Stafford  
Scott Storey  
Suzanne Sullivan  
Susan Ball Insurance Agency, Inc.  
Edward Terranova  
John Trombly  
Richard and Rachel Vanwinkle  
A.J. and Barbara Weaver  
Richard Williams  
Robert and Susan Wilson  
Carl and Susan Windels  
Duane and Betty Youse  
Theodore and Susan Zenzinger  
Ervin Zimmer

#### **ASPE Scholarship**

American Society of Professional Estimators  
Murphy Company

#### **Cheryl A. Burgett Memorial Scholarship**

Ed Burgett  
John and Candace Garrod  
Amy Palmer

#### **Collier Family Scholarship**

Malcolm E. Collier  
Community First Foundation

#### **Engineering Graphics Scholarship**

Axel and Myrlynn Sjogren

#### **Exceptional Learners Scholarship**

Don and Alvina Mabry

#### **FirstBank Scholarship**

FirstBank Holding Company

#### **Gardner Family Foundation Early Childhood Education Scholarship**

The Gardner Family Foundation/Wendell and Pauline Gardner

#### **Geiger Scholarship**

David and Joyce Geiger

#### **Grainger, Tools for Tomorrow Scholarship**

Grainger, Inc.

#### **Hazelrigg Scholarship**

Chuck and Luanne Hazelrigg

#### **Hartong Scholarship**

William and Elaine Hartong  
Procter & Gamble Fund

#### **Johnson Financial Aid Program**

The Helen K. and Arthur E. Johnson Foundation

#### **Kingdom Enlightenment Scholarship**

Kingdom Enlightenment Scholarship Foundation

#### **Lakewood High School Graduating Class of 1960 Scholarship**

Joyce Abbott  
Ray and Penny Bertrand  
Joseph and Patricia Bielat  
Michael Cruth  
Carol Fernau  
Carl and Joan Hoagland  
Lucille Howard  
Larry and Myrna Lacina  
Will and Marcia Luden  
The Manwaring Family Trust  
Guy Martin  
William and Mary Ross

#### **Lakewood on Parade Scholarship**

Lakewood on Parade

#### **Lillian LaFleur Scholarship**

Harold and Lillian LaFleur, Jr.

#### **Martin Family Foundation Scholarship**

The Martin Family Foundation/John and Mari Ann Martin

#### **Mathews Family Scholarship**

Harry and Cris Mathews

#### **Metzger Family Scholarship**

Les and Sue Metzger

#### **Renewable Energy Scholarship**

Solar Energy Environments, LLC

#### **RRCC 40th Anniversary Scholarship**

Anonymous Friend  
Agneta Albinsson and Mats Wahlstrom  
AMG National Trust Bank  
Geri Anderson  
Kristen Anderson  
Kristin Aslan  
Mary Athearn  
Robert and Margaret Barber  
Jane McLean Barnes  
Kevin and Michelle Bervik  
Mike Bestor  
Pat and Darlene Bishop  
Bradley Consulting Group  
John and Barbara Brant  
John and Christina Brant

Branzan Investment Advisors, Inc.

Dewey Bridge  
Nancy Brittain  
Karen Buck  
Keven and Lisha Burnett  
Christie Burton  
Holly Butler-Roberts and Scott Meiklejohn  
Timothy and Sharon Campbell  
Gregory and Linda Card  
Steven Castillo  
Sharon Cate  
Central City  
City of Arvada  
City of Golden  
City of Lakewood  
City of Wheat Ridge  
Colorado Community College Systems  
Colorado Gaming Association  
Colorado School of Mines  
Johnny Conover  
Shelley Cook  
Jim and Danielle Dascalos  
Rob and Paulann Doane  
David Donaldson and Anne McLean  
Morris and Shelley Dressler  
Michael Dunahay  
Robert and Daria Dundas  
Robert Dyer and Erika O'Hara  
Kevin Edwardson  
Ronald Engels  
Kenneth and Jill Fellman  
FirstBank  
Nile Frederickson and Peggy Morgan  
Robert and Candy Frie  
Robb and Helen Gair  
Robert Giancola  
Preston and Patty Gibson  
Gilpin County  
Tina Goar  
Rhonda Gorenz-Macy  
Margaret Grene  
Phyllis Hancock  
Helen Han and Geoff Simpson  
Michele Haney  
Richard Hawkins  
Hebert Advisory Services, Inc.  
Jefferson County Schools  
Jefferson Foundation  
Gary and Colleen Jorgensen  
Phyllis Knight  
David and Sally Kribs  
Kevin and Renee Kulbacki  
Golden Software, Inc.  
Harry and Cris Mathews  
Nancy McCallin  
Kelly McDermott  
Barbara McDonnell  
Molly McNally Dunn  
Ron Miller  
Arn and Ana Miller  
Tina Minichello  
Dan Moyle  
David and Joan Munch  
Fay O'Guin  
Paul and Melinda O'Rourke  
David Puchi  
Thomas Reily  
Kimberly Rein  
Richard Reinhardt  
Cliff and Terrie Richardson  
Rock Polymers, Inc.

Rocky Mountain Education Center  
Stephanie Sanborn  
Ted and Deb Sandquist  
State Farm Insurance Co.  
Bob and Dru Short  
Ron and Karen Slinger  
Robert and Joan Smith  
Roelof Snieder  
Sooper Credit Union  
Andrew and Molly Stevens  
Cynthia Stevenson  
Suncor Energy, Inc.  
The Tanner Family  
Lois Tate  
Dave Thomas  
Sharon and John Trefney  
Bill and Denise Waddell  
Bruce and Louisa Walthers  
Mark and Luanne Williams  
Richard Williams  
Wells Fargo Bank

#### **RRCC Foundation Scholarship**

Daniel and Suzanne Anderson  
John and Lorraine Bandimere, Jr.  
Marjorie Berman  
Mary Bindner  
Bessie Boyd  
Amy Braziller  
Daniel and Janet Brown  
Peggy Burrus  
Linda Buzogany  
Eleanor Camann  
Susan Cornick and William Gumbart  
Sherry Messina Dewald  
Donald and Billy Lee Elrick  
John and Candace Garrod  
Michele Haney  
Sandia Hayes  
Gary and Colleen Jorgensen  
Carla Joy  
Susan Knepley  
Randy and Anita Landis-Eigsti  
Luna Gourmet Coffee & Tea Company, LLC  
Dan Macy  
Darlene Marshall  
Doug Mangan and Carolyn Mattern  
Molly McNally Dunn  
Cynthia Morgenthaler  
Thomas and Marta Murray  
Helga O'Dell  
John Oldani, Jr.  
Patricia Pacheco  
PEO Sisterhood-Chapter GW  
Rick and Terry Reeves  
Dennis and Kathy Reul  
Mary Romano  
Carl and Carolyn Schiele  
Robert and Joan Smith  
Marilyn Smith  
Jay Sullivan  
Suzanne Sullivan  
William and Lydia Walsh  
James and Sylvia Willard  
Carol Wilsey  
John and Jean Witwer  
Michael and M. Rose Zaccaro

#### **Suncor Energy Scholarship**

Suncor Energy, Inc.

## **UNRESTRICTED FUNDS**

### **Fund for Excellence**

Eric Adelman  
Agneta Albinsson and Mats Wahlstrom  
John and Florence Anderson  
Kristen Anderson  
AR7 Architects, A Professional Corporation  
Kristin Aslan  
Rich and Judy Billings  
Wendy Bird  
Bessie Boyd  
Timothy and Kathy Bradley  
Steve Brown  
Karen Buck  
Ted and Donna Connolly  
Jim and Danielle Dascalos  
DCP Midstream Matching Gifts Program  
Julie Dike  
Di Drobnick  
Robert and Candy Frie  
Preston Gibson  
Nile Frederickson and Peggy Morgan  
Griffin Foundation, Inc.  
Jamie Hahn  
Ellen Hajek  
Michele Haney  
William and Jane Hays  
Catherine Henry and Tom Radigan  
Dean and Soomin Hess  
Ted and Dorothy Horrell  
Verne Ingram  
Bill and Ann Iwata  
David and Lynn Johnson  
Gary and Colleen Jorgensen  
Allen and Marilyn Kenfield  
Kinder-Morgan Foundation  
Craig Kocian  
Susan Kumpf  
Darrel and Pam Lathrop  
Library Interiors West, Inc.  
Debra Maya  
Nigel Middleton  
Melodie Moll  
David Munch  
Nine Health Services, Inc.  
Charles and Trish Ochsner  
William and Peggy Orchard  
Lynne Powell  
Red Rocks Union Construction  
Roger and Margaret Reisher  
Allen and Carol Salzmann  
Dennis and Kathy Schissler  
Ron Slinger  
Marilyn Smith  
Kenneth Snell  
Jack and Nancy Stanesco  
Cynthia Stevenson  
Tammara Straub  
Tamara Stubbs  
Thomas and Judy Swart  
Harry Swift  
Lois Tate  
Katharine Thomas  
Art and Monica Thompson  
Bruce and Louisa Walthers  
Wells Fargo Community Support Campaign  
The West Chamber  
Chi Wilson  
John and Jean Witwer

Rebecca Woulfe  
Duane and Betty Youse  
Zonta Club of Denver

## **MEMORIAL DONATIONS**

### **In Memory of Al Meiklejohn Designated to the Al and Mindy Meiklejohn Scholarship Endowment**

William Ashton  
Steven and Margaret Bathgate  
La'Fawn Biddle  
Thomas and Tricia Campbell  
Thomas and Mim Carney  
City of Arvada  
Colorado Education Association  
Jeff and Toni Condon  
Joseph and Mary DiPaolo  
Robert Eckhardt  
John and Lillian Gaudio  
Jacquie Haughton  
Holliday Insurance  
Jones & Keller, P.C.  
Charles and Helen Kelsall  
David and Tammie Kelsall  
Richard Koeppel  
Tony and Billie Rollins  
Carl and Carolyn Schiele  
John Towns  
Marc and Luanne Williams

### **In Memory of Mindy Meiklejohn Designated to the Al and Mindy Meiklejohn Scholarship Endowment**

William Ashton  
Ronald and Elaine Birely  
Joseph and Mary DiPaolo  
Kenneth and Jill Fellman  
John and Lillian Gaudio  
Holliday Insurance  
Charles and Helen Kelsall  
William and Mary Ross  
Marc and Luanne Williams

### **In Memory of Walter Nelson Designated to the Walter Nelson Memorial Scholarship**

Christopher Howell

### **In Memory of Kathleen Shannon Designated to Fine Woodworking, Friends of The Shop**

Susan Roy  
Robert and Patricia Thomas

*It is the policy of the Red Rocks Community College Foundation to promptly acknowledge the receipt of all donations.*

*Moderate administrative fees are charged annually for all funds. Fees currently range from 0 to 4 percent. The fee covers expenses such as record keeping, audits, tax returns, creating financial statements, scholarship and grant fund applications, and more. If you have questions about these fees, please contact Paulann Doane at 303-914-6425.*

