



<b>Admissions/Registration</b> .....	<b>4</b>
<b>Calendar</b> .....	<b>3</b>
<b>Campus Directory</b> .....	<b>16</b>
<b>Campus Locations</b> .....	<b>2</b>
<b>Campus Services</b> .....	<b>11</b>
<b>Summer Courses</b>	
<b>Arvada Summer Courses</b> .....	<b>22</b>
<b>Lakewood Summer Courses</b> .....	<b>24</b>
<b>Fall Courses</b>	
<b>Arvada Fall Courses</b> .....	<b>56</b>
<b>Lakewood Fall Courses</b> .....	<b>61</b>
<b>Scheduling Options (Weekend, Online, Accelerated, Self-Paced, Flex, and Hybrid)</b>	
<b>Summer Options</b> .....	<b>41</b>
<b>Fall Options</b> .....	<b>98</b>
<b>Degrees &amp; Certificates</b> .....	<b>13</b>
<b>Financial Aid/Scholarships</b> .....	<b>10</b>
<b>General Education Transfer</b> .....	<b>14</b>
<b>LARC/Library</b> .....	<b>12</b>
<b>Reading Your Schedule</b> .....	<b>17</b>
<b>Tuition and Fees</b> .....	<b>8</b>
<b>Tuition Payment</b> .....	<b>9</b>

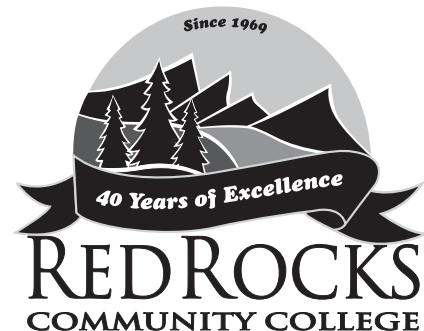
## Campus Closure

When bad weather or emergency conditions require that either of the Red Rocks campuses are closed, check the latest information via the news media (radio and TV stations), campus telephone, or the college Web site.

Red Rocks Community College is exempt from the State Inclement Weather Policy and may remain open while other state government offices close. If the campus is to be closed for an entire day, every effort will be made to have a decision by 5:30 a.m.

If the campus is to close for the evening, every effort will be made to have a decision by 4 p.m.

**Information: 303.914.6555 or [www.rrcc.edu](http://www.rrcc.edu)**



## Lakewood Campus



**13300 W. 6th Avenue  
Lakewood, CO 80228-1255  
303.914.6600**

The Lakewood campus lies on a 140-acre hillside just off 6th Avenue and Indiana Street (along the 6th Avenue Service Road). With innovative educational programs offered both in the classroom and online, plus our dedicated faculty members, outstanding student life, and financial aid opportunities, Red Rocks is the first choice for higher education among graduating seniors in Jefferson County.

### Campus Services

- Admissions/Registration/Student Records
- Assessment
- Academic Advising
- Assistive Technology Lab
- Bookstore
- Cafeteria and Coffee Shop
- Career Counseling
- Cashier's Office
- Children's Center
- Financial Aid Office
- Fitness Center
- GED Pre-test
- LARC/Library
- Student Project Center
- Student Employment Center
- Tutoring (free for RRCC students)

### Hours

Office hours vary. See the Campus Directory on page 16. Call **303.914.6600** for more information.

## Arvada Campus



**5420 Miller Street  
Arvada, CO 80002-3069  
303.914.6010**

The Arvada campus lies just northwest of the intersection of I-70 and Kipling. The campus is known for its expansive views to the west and the view of downtown Denver to the east.

The Arvada Campus offers a selection of college prep and general education courses and is home to the Process Technology program, the Wind Energy Technology program, the Holistic Health program, and the Medical Imaging program, which includes X-ray technology and Ultrasound.

### Campus Services

- Admissions and Registration
- Assessment
- Academic Advising
- Career Counseling
- Financial Aid Information
- GED Pre-test
- LARC/Computer Commons
- Tutoring (free for RRCC students)

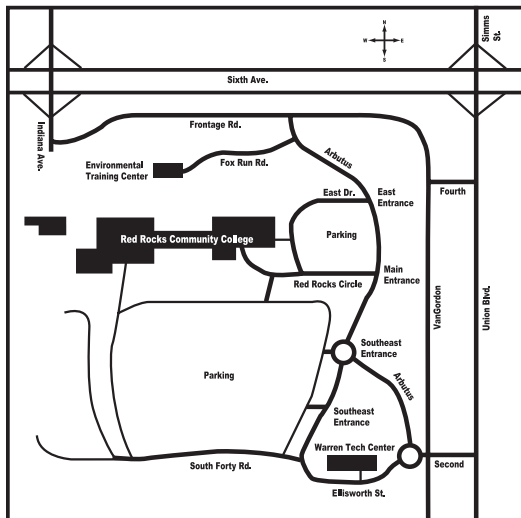
### Hours

#### Campus services and LARC:

Monday-Thursday	8 a.m. - 9 p.m.
Friday	8 a.m. - 10 p.m.*
Saturday	8 a.m. - 5 p.m.
Sunday	Closed

\* Hours vary during Weekend College

Office hours vary. See the Campus Directory on page 16. Call **303.914.6010** for more information.



## Summer 2011

Registration for Summer 2011 begins .....	April 4
Registration for Fall 2011 begins .....	April 4
Registration payment due by 5 p.m. (for registration on or before May 12)* .....	May 12
<b>(If you register and do not drop your class, you will be responsible for payment.)</b>	
Interim May Day Sessions begin (one or two week sessions) .....	May 16
New Student Orientation .....	May 24
International Student Orientation .....	May 26
No classes after 5:00 p.m. ....	May 27
No classes; Memorial Day Holiday (campuses closed) .....	May 28, 29, 30
<b>Full Term Eight and Nine-Week Sessions begin (both campuses) .....</b>	<b>June 1</b>
(Other classes begin throughout the semester. )	
<b>Eight-week Session:</b>	
Deadline for credit/audit changes for 8-week course .....	June 8
Last day to drop 8-week classes and initiate a tuition refund* .....	June 8
Last day to withdraw from 8-week classes ("W" recorded-no refund) .....	July 15
Eight-week Session ends .....	July 27
<b>Nine-week Session:</b>	
Deadline for credit/audit changes for 9-week courses .....	June 9
Last day to drop 9-week classes and initiate a tuition refund* .....	June 9
Last day to withdraw from 9-week classes ("W" recorded-no refund) .....	July 21
Nine-week Session ends .....	August 3
Foundation Scholarship application for Fall 2011-Spring 2012 deadline; due by 5 p.m. ....	June 3
Application deadline for summer graduation .....	June 9
Deadline for petition for residency reclassification .....	June 9
Registration payment due by 5 p.m. (for registrations after May 12)* .....	June 9
<b>(If you register and do not drop your class, you will be responsible for payment.)</b>	
No classes after 5 p.m. ....	July 1
No classes; Independence Day Holiday (both campuses closed) .....	July 2, 3, 4
<b>Summer Sessions end .....</b>	<b>August 3</b>

## Fall 2011

Fall Registration begins .....	April 4
Registration payment due by 5 p.m. (for registration on or before Aug. 1)* .....	August 1
<b>(If you register and do not drop your class, you will be responsible for payment.)</b>	
New Student Orientation .....	August 16
International Student Orientation .....	August 18
15-week Weekend classes begin .....	August 19
<b>15-week Session begins (other classes begin throughout the fall) .....</b>	<b>August 22</b>
<b>Session 1 (August 22 – October 10) .....</b>	<b>August 22</b>
Last day to add full-term classes .....	August 26
No classes after 5:00 p.m. ....	September 2
Labor Day weekend; No classes (both campuses closed) .....	September 3-5
Application deadline for fall graduation .....	September 7
Deadline to petition for residency reclassification .....	September 7
Deadline for credit/audit changes for 15-week classes .....	September 7
Last day to drop 15-week classes and initiate a tuition refund .....	September 7
Registration payment due by 5 p.m. (for registration after August 1)* .....	September 7
<b>(If you register and do not drop your class, you will be responsible for payment.)</b>	
No classes; All-College Development Day .....	October 18
<b>Session 2 (October 19 – December 13) .....</b>	<b>October 19</b>
Spring 2012 Registration begins .....	November 7
Last day to withdraw from 15-week classes ("W" recorded-no refund) .....	November 17
No Classes; fall break .....	November 21-27
Thanksgiving Holiday (both campuses closed) .....	November 24, 26-27
<b>Fall Session ends .....</b>	<b>December 13</b>

\* Certain classes meet outside the regular semester dates. Drop and withdrawal dates vary for each of these classes, depending on the starting date and the length of the class. See individual course listings in the schedule for drop and withdrawal dates.

## Admissions Criteria

RRCC welcomes anyone 17 years of age or older, who can benefit from our instructional programs and courses, including high school graduates, non-graduates, or students at least 16 years old who are currently enrolled in a high school Concurrent Enrollment program. Students younger than age 17 who are not in a Concurrent Enrollment program may apply for a waiver of the age requirement through the office of the Vice President for Student Services.

The Director of Enrollment Services reviews any questions regarding admission. Any admission that is based on false statements or documents may be reversed. Credits for classes completed under these circumstances may be revoked. The college may review your enrollment if you do not appear to be profiting from instruction or if your enrollment poses a hazard to yourself or others.

### Admission does not ensure acceptance into a particular course or program.

Some programs have limited space and special admissions procedures. Applicants for these programs must contact the appropriate department.

### To apply for admission online:

1. Go to [www.rrcc.edu](http://www.rrcc.edu).
2. Click on **"Enroll Now"** at the very top of the page and follow directions to complete your application. (*We will attempt to notify you of your status, via email, within 48 hours.*)

You can also apply by filling out a paper application, available in the Admissions Office or download at:

1. [www.rrcc.edu](http://www.rrcc.edu)
2. Click on **Admissions**
3. Click on **Application for Admission**
4. Click on **Printable Application for Admission**

Information: 303.914.6360  
[www.rrcc.edu/admis](http://www.rrcc.edu/admis)

## House Bill-06S-1023

In July 2006, the Colorado State Legislature enacted HB-06S-1023, which became effective on August 1, 2006. This legislation requires all citizens who apply for state-funded benefits that entail any payment or financial assistance provide proof that they are lawfully present in the United States. Non-compliance with this requirement will change you to a non-resident for tuition purposes.

Information: [www.colorado.gov/cs/Satellite/Revenue-Main/XRM/1216289012112](http://www.colorado.gov/cs/Satellite/Revenue-Main/XRM/1216289012112)

## Notification of Rights Under FERPA for Postsecondary Institutions

The Family Educational Rights and Privacy Act (FERPA) affords you certain rights with respect to your education records.

To learn more see the college catalog or the RRCC Student Handbook.


### Information:

Susan Kumpf in Student Records, 303.914.6356


## Student ID #/PIN

Red Rocks Community College assigns you a computer-generated ID which will protect the confidentiality of your social security number, thereby protecting your identity and privacy. Social security numbers are not used as the "identifier" for students. Your ID number is eight digits beginning with an "S". **Example: S01234567**

You will receive your "S" number after you have applied. **If you are a continuing student, you may obtain your "S" number by completing the following:**


1. Go to [www.rrcc.edu](http://www.rrcc.edu)
2. Click on 
3. Click on **Lost student number?** in the "Need Help?" area of the log in window.
4. If you have forgotten your password, click on **Forgot password?** in the "Need Help?" area of the log in window.

## To Register or Add Classes Online

1. Go to [www.rrcc.edu](http://www.rrcc.edu)
2. Click on 
3. Enter your Student Number
4. Enter your password. If you do not remember your password, click on **Forgot password?** in the "Need Help?" area of the log in window.
3. Click on the **Student** tab
4. Under Registration Tools, click on **Add or Drop Classes**
5. Select the appropriate term, and click "Submit"
6. Follow directions at the top of the page. (Note: You can enter the CRN #s of the courses you would like in the boxes, or you can do a course search if you do not know the CRN. The CRN # is the first 5 digit number in the course listing. For example: 36340 would be the CRN for Astronomy 101)
7. Remember to authorize the College Opportunity Fund (COF) if you have not previously selected Lifetime Authorization.
8. You can view your bill by clicking on the **Student Finance** tab, under **Payment Options, View Tuition Bill.**


## Drop and Withdraw Dates

All adds, drops and withdraws must be initiated in Admissions or online. Drop and withdrawal dates can be found by following these steps:

1. Go to [www.rrcc.edu](http://www.rrcc.edu)
2. Click on 
3. Enter your Student Number
4. Enter your password. If you do not remember your password, click on Forgot password? in the "Need Help?" area of the log in window.
3. Click on the Student tab
4. Under Registration Tools, click on **Detailed Student Schedule (with drop & withdrawal dates)**

► **Failure to officially drop or withdraw may result in a failing grade for the class. You will also be responsible for full payment of the class.**

## To Drop or Withdraw Classes Online

1. Go to [www.rrcc.edu](http://www.rrcc.edu)
2. Click on 
3. Enter your Student Number
4. Enter your password. If you do not remember your password, click on Forgot password? in the "Need Help?" area of the log in window.
5. Click on the Student tab
6. Under **Registration Tools**, click on **Add or Drop Classes**
7. Select the appropriate term, and click "Submit"
8. Follow directions at the top of the page.


► **NOTICE: To drop a class, you must do so by the drop date for that class. Classes dropped after the drop date result in a "W" grade and are considered a withdraw. You will also be responsible for full payment of the class.**

If you are an international student, you need permission from an international student advisor to make any adjustments in your schedule. Financial aid recipients who withdraw or reduce credit hours must consult with a Financial Aid counselor regarding repayment of financial aid funds, if applicable.

## Colorado Residents: To apply for and authorize the College Opportunity Fund (COF).

There are two (2) steps:


**Step One** is to **create the account** - you only have to do this once.

- Please go to the RRCC Web site at [www.rrcc.edu](http://www.rrcc.edu)
- Select the  icon found in the **Log In** section
- Enter your **Student Number**
- Enter your **Password** (The first time you access this account you will use your birth date mmddyy. You will then be directed to answer a security question and change your password.)
- Click on the **Student Finance** tab
- Click on **Apply for COF** under **Payment Options**
- Click on **Apply for a Stipend** - Follow the directions for creating a 'stipend' account.

**Tips:** do not enter dashes for your social security number or your driver license/ID number. When entering your user name and password, DO NOT USE special characters such as \_^&#. You should see "**Congratulations – Print this Page**" when you have applied successfully.

**Or** You may go to [www.rrcc.edu/cof](http://www.rrcc.edu/cof) - Sign up for COF – Apply for a stipend.

**Step Two** is to **authorize the use of this funding toward your tuition** - allowing Red Rocks Community College to accept these funds on your behalf.

- Please go to the RRCC Web site at [www.rrcc.edu](http://www.rrcc.edu)
- Select the  icon found in the **Log In** section
- Enter your **Student Number**
- Enter your **Password**
- Click on the **Student Finance** tab
- Click on **Authorize COF for this term** under **Payment Options**
- **Select a Term** and click **Submit**
- Select  **I choose to Authorize use of my COF stipend for all eligible credits for this term and all future terms** (single click shows changes have been saved)

**OR** You may stop by the Admissions desk to activate your COF authorization.

### If you have questions regarding the College Opportunity Fund, please contact:

Marilyn Kenfield, Admissions Coordinator  
Red Rocks Community College  
13300 W. Sixth Avenue, Box 5  
Lakewood, CO 80228

Email: [marilyn.kenfield@rrcc.edu](mailto:marilyn.kenfield@rrcc.edu)  
Phone: 303.914.6268  
Fax: 303.989.6919

## Assessment

If you are a new student, the state of Colorado mandates you take an assessment test for basic skills in reading, sentence skills and mathematics. Accuplacer, the assessment test, helps you and your advisor make appropriate course choices. Students who have graduated from or attended a Colorado public or private high school (or its equivalent) during the past two years or students who will be working toward a degree within the Colorado Community College System must complete the Accuplacer. If you have taken ACT or SAT, please check our Web site to see if your scores exempt you from this requirement. Your Reading and English scores are good for 5 years; However, Math scores are only good for 2 years.

If you have taken college coursework prior to starting classes at RRCC, please bring a transcript showing the coursework. An academic advisor will help you determine if you need to take the Accuplacer.

Study guides for the Accuplacer are available on our Web site and we highly recommend that you review these before taking the test. There is no fee for the first time you take the Accuplacer. If you wish to retest, there is a \$5.00 charge for each repeated subtest.

When you plan to test, please be sure you have completed an application to RRCC and bring a state or federal issued picture ID with you; no appointment is necessary. The Accuplacer takes approximately 90 minutes, although you may take as long as you need to complete the test. The start times for testing are listed below.

### Lakewood Campus Assessment Center 303.914.6720

Monday - Thursday 9 a.m. - 6 p.m.

Friday 9 a.m. - 5 p.m.

Selected Saturdays. Please check Assessment Web site for Saturdays that the Assessment Center will be open.

### Arvada Campus Assessment Center 303.914.6010

Monday - Thursday 9 a.m. - 6 p.m.

Friday 9 a.m. - 4 p.m.

Saturday 9 a.m. - 11 a.m.

For students needing to take the Accuplacer at a remote location, please see our Web site for options.

**Information: 303.914.6720 or  
www.rrcc.edu/assessment**

## Advising

Academic advisors can help you select courses, identify course prerequisites, obtain program information, evaluate assessment results, check graduation requirements, and assist with transfer planning to a four-year college or university. Advisors are available for limited advising and schedule planning on a walk-in basis or by appointment for more detailed academic goal planning. All students are strongly encouraged to consult with an advisor before determining a degree or certificate program. Only one degree change per semester will be allowed.

**Information: 303.914.6255 or  
www.rrcc.edu/advising**

### The Lakewood Advising Center hours

Monday through Thursday, 8 a.m. to 5:30 p.m., and  
Friday, 9 a.m. to 4:30 p.m.

### Arvada Campus Advising

By appointment only, call 303.914.6010.

## High School Students Seeking College Credit

We welcome high school students who can benefit from our instructional programs. To get started, follow these simple steps:

1. **Talk to your high school counselor:** Upon approval from your counselor, you may take courses at RRCC for dual high school and college credit. Ask your counselor about Warren Tech and Concurrent Enrollment (CE) Options.
2. **Fill out paperwork:** Complete your RRCC Application for Admission and Concurrent Enrollment Agreement and Registration form (available at your high school counseling office or the RRCC High School Relations Department). Apply for the College Opportunity Fund (COF) and authorize its payment (on your behalf) to Red Rocks. If you don't complete the COF process, you will be responsible for full payment of all tuition and fees your high school does not cover for each course in which you enroll. See COF on page 5 and 8.
3. **Complete the assessment process:** Take the free Accuplacer at RRCC or provide the Assessment Center your ACT or SAT scores.
4. **Visit a RRCC advisor:** Call the High School Relations office at 303.914.6350 to schedule an appointment for academic advising and registration.

**Information: 303.914.6350 or meet with your high school counselor**

**www.rrcc.edu/hs**

## International Students

International students have F1 visas to study in the United States.

1. Contact the English Language/Intercultural Services Office for an International Student Application: LARC - Room 1260 and 1262, or call 303.914.6416, or visit [www.rrcc.edu/international](http://www.rrcc.edu/international)
2. Meet with an international student advisor to review your educational goals and plan the courses needed to achieve those goals. Review this plan frequently with an international student advisor in the Advising Office.
3. Register in person at the English Language/Intercultural Services Office. F1 students must register for at least 12 credits for both fall and spring semesters.

Plan ahead and register early in order to have the best selection of courses and class times.

**Information: 303.914.6416 or [www.rrcc.edu/international](http://www.rrcc.edu/international)**

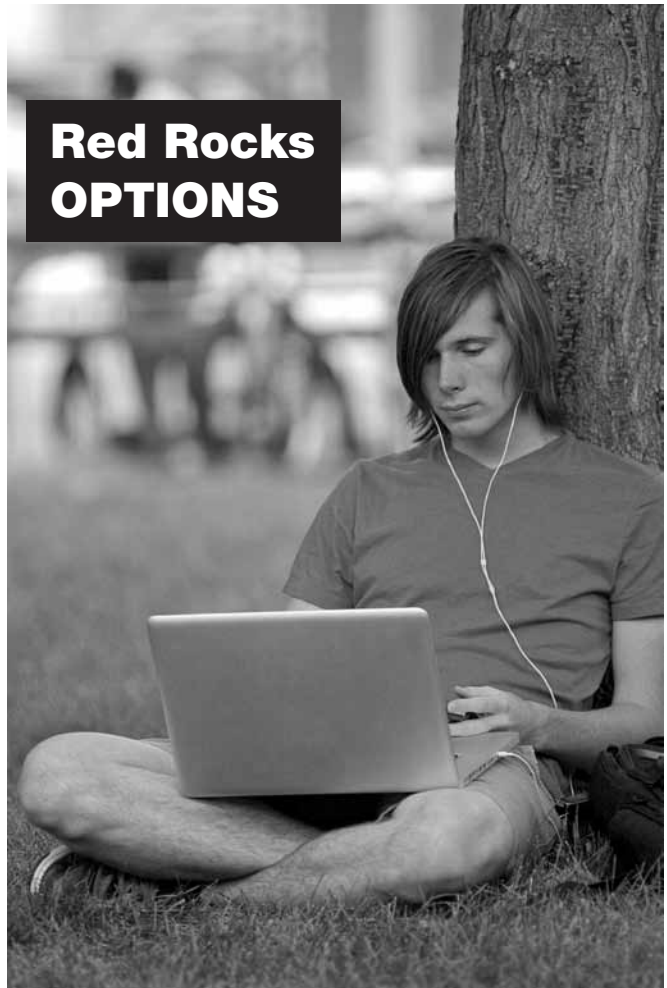
## Western Undergraduate Exchange

The Western Undergraduate Exchange (WUE) is a program of the Western Interstate Commission for Higher Education (WICHE). Students who are residents of WICHE states may enroll at participating two- and four-year college programs outside of their home state at a reduced tuition rate. WICHE states include Alaska, Arizona, California, Colorado, Hawaii, Idaho, Montana, Nevada, New Mexico, North Dakota, Oregon, South Dakota, Utah, Washington, and Wyoming.

If you're a resident of a WICHE state, you can study at RRCC or any one of the 135+ participating schools in the West and pay reduced tuition.\* WUE/WICHE students are not eligible to participate in the College Opportunity Fund (COF). The Physicians Assistant program is not available for this program.

\* A student participating in the WUE/WICHE program may not use the time in Colorado to fulfill the physical presence requirement for in-state tuition. WUE participants must comply with HB-06S-1023 by proving lawful presence in the United States. See the Tuition and Fees page in this schedule for details on WUE/WICHE rates.

**Information: 303.914.6543 <http://wue.wiche.edu>**



## Red Rocks OPTIONS

### Scheduling options for your active lifestyle:

- Weekend College
- Hybrid
- RRCC Online
- Accelerated
- Self-Paced/Flex
- CCCOnline

#### Red Rocks Options Courses

**Summer ..... page 41**

**Fall ..... page 98**

Information also available at [www.rrcc.edu/options](http://www.rrcc.edu/options)

## Tuition rates below are effective for Spring and Summer 2011.

Tuition rates and course fees are set annually by the State Board for Community Colleges and Occupational Education. At the time of publication, rates and course fees had not been approved for Fall 2011, Spring 2012, or Summer 2012. All tuition rates and course fees are subject change.

### Resident Tuition Rates

Credits	Student Share Tuition	COF Stipend Tuition*	Total Tuition	Registration Fee	Student Fee**	Total Cost	Student Share Tuition, Fees
1	\$96.25	\$62.00	\$158.25	\$11.45	\$9.15	\$178.85	\$116.85
2	\$192.50	\$124.00	\$316.50	\$11.45	\$18.30	\$346.25	\$222.25
3	\$288.75	\$186.00	\$474.75	\$11.45	\$27.45	\$513.65	\$327.65
4	\$385.00	\$248.00	\$633.00	\$11.45	\$36.60	\$681.05	\$433.05
5	\$481.25	\$310.00	\$791.25	\$11.45	\$45.75	\$848.45	\$538.45
6	\$577.50	\$372.00	\$949.50	\$11.45	\$54.90	\$1,015.85	\$643.85
7	\$673.75	\$434.00	\$1,107.75	\$11.45	\$64.05	\$1,183.25	\$749.25
8	\$770.00	\$496.00	\$1,266.00	\$11.45	\$73.20	\$1,350.65	\$854.65
9	\$866.25	\$558.00	\$1,424.25	\$11.45	\$82.35	\$1,518.05	\$960.05
10	\$962.50	\$620.00	\$1,582.50	\$11.45	\$91.50	\$1,685.45	\$1,065.45
11	\$1,058.75	\$682.00	\$1,740.75	\$11.45	\$100.65	\$1,852.85	\$1,170.85
12	\$1,155.00	\$744.00	\$1,899.00	\$11.45	\$109.80	\$2,020.25	\$1,276.25

### Non-resident Tuition Rates

Credits	Tuition	Registration Fee	Student Fee**	Total Cost
1	\$413.60	\$11.45	\$9.15	\$434.20
2	\$827.20	\$11.45	\$18.30	\$856.95
3	\$1,240.80	\$11.45	\$27.45	\$1,279.70
4	\$1,654.40	\$11.45	\$36.60	\$1,702.45
5	\$2,068.00	\$11.45	\$45.75	\$2,125.20
6	\$2,481.60	\$11.45	\$54.90	\$2,547.95
7	\$2,895.20	\$11.45	\$64.05	\$2,970.70
8	\$3,308.80	\$11.45	\$73.20	\$3,393.45
9	\$3,722.40	\$11.45	\$82.35	\$3,816.20
10	\$4,136.00	\$11.45	\$91.50	\$4,238.95
11	\$4,549.60	\$11.45	\$100.65	\$4,661.70
12	\$4,963.20	\$11.45	\$109.80	\$5,084.45

Colorado state law defines the conditions that qualify you for in-state tuition. Your initial classification is based on information you supply on the Application for Admission. You must live in the state of Colorado for 12 consecutive months before you can apply for reclassification to resident status. The Petition for Residency Reclassification is available in the Admissions Office. The deadline for a change in status for Summer 2011 is June 8, 2011 and for Fall 2011 is September 7, 2011.

### Colorado Residents



#### • Sign up for the College Opportunity Fund (COF).

COF is a state-funded program that provides a per-credit subsidy for residents attending state-supported and participating private colleges and universities. This money, referred to as the COF stipend, is applied to an in-state student's tuition, provided the student applies for and authorizes its use. The college you are attending will receive the money and it will appear as a tuition credit on your bill. COF rates are set annually by the Colorado General Assembly. Failure to apply for COF or comply with HB1023 could result in your tuition being changed to non-resident. If you do not apply for COF funding, you are responsible for both the student share and the state share of all tuition and fees. (You need to apply for COF only once, and you must authorize its use.) Please review your bill each term to ensure your COF stipend has been correctly applied to your account. <https://cof.college-assist.org>

### Online, Nursing, PA Program, and WUE/WICHE Tuition Rates

#### RRCC Online & CCCOnline Tuition

**Resident Tuition:** \$170.15 student share, \$62.00 COF stipend per credit hour. Total tuition \$232.15 per credit.

**Non-Resident Tuition:** \$259.30 per credit hour

#### NUR Online

**Resident Tuition:** \$214.15 student share, \$62.00 COF stipend per credit hour. Total tuition \$276.15 per credit.

**Non-Resident Tuition:** \$303.30 per credit hour

#### Nursing Courses (NUR)

**Resident Tuition:** \$140.25 student share, \$62.00 COF stipend per credit hour. Total tuition \$202.25 per credit.

**Non-Resident Tuition:** \$413.60 per credit hour

#### Physician Assistant Program (PAP)

**Resident Tuition:** \$362.00 student share, \$62.00 COF stipend per credit hour. Total tuition \$424.00 per credit.

**Non-Resident Tuition:** \$462.84 per credit hour

#### Western Undergraduate Exchange (WUE/WICHE)

**Non-Resident WUE/WICHE Base Tuition:**

\$144.40 per credit hour.

**Non-Resident WUE/WICHE NUR Tuition:**

\$188.40 per credit hour.

**Non-Resident WUE/WICHE RRCCOnline and CCCOnline Tuition:** \$259.30 per credit hour.

**NUR Online WUE/WICHE Tuition:** \$303.30 per credit hour.

*Note: WUE/WICHE rates are not available for the Physician Assistant Program. <http://wue.wiche.edu>*

**All course fees:** \$6.05 per credit hour for designated courses. **Cisco fees:** \$16.60 per credit hour for designated courses.

**CCCOOnline Digital Textbooks:** \$49.00 per course for designated courses.

**\*\*Student Fees** of \$9.15 per credit hour include: Student Activity Fee \$5.45. Student Center Bond \$2.50.

Parking Fee \$1.20. Total Fees \$9.15. *Note: Total student fees not to exceed 12 credit hours*

## Methods of Payment

### In person:

You can pay by cash, personal check, MasterCard, Visa, Discover Card, or American Express at the Cashier's Office at the Lakewood campus; the Arvada campus does not accept in-person payments. If you are sponsored by a third party, such as an employer or other agency, bring a check to the Cashier's Office from the sponsor or a letter stating that the sponsor will pay upon receipt of billing and before grades are released. Scholarships which have been awarded will be posted to your student account. Scholarships payable to international students have specific IRS requirements. If you are an international student a portion of your scholarship may be withheld to pay US federal taxes.

### By mail:

Mail a check or money order to:  
Red Rocks Community College  
Cashier's Office, Box 2  
13300 W. 6th Ave., Lakewood, CO 80228-1255

### To pay online, go to [www.rccc.edu](http://www.rccc.edu).

Log in to "The Rock" using your student ID#. Click the **Student Finance** tab and under **Payment Options**, choose the **"Pay online with a credit card"** link. Only MasterCard and VISA are accepted online. To pay with American Express or Discover, please contact the Cashier's Office at 303.914.6222.

## Billing and Payment Dates

**DO NOT WAIT FOR A BILL.** Your student bill is available online on demand in the portal. Log in to "The Rock" using your student ID#. While you are in The Rock, be sure to activate your student email address. Your student email address is the primary method we will use to communicate with you regarding your student bill. Please feel free to email [cashiers.office@rccc.edu](mailto:cashiers.office@rccc.edu) with any questions about your student bill.

### See the calendar on page 3 for payment dates.

Unless you are on a payment plan through AES, payment in full is due no later than the first day of class.

▶ **Do not assume you have been dropped from a class for missing payment deadlines, for not logging in to an online class, or for not attending class; you must ensure that you drop a class before the drop/refund date or you will be responsible for full payment.**

### You may drop a class online or by email to:

[admissions@rccc.edu](mailto:admissions@rccc.edu), or by fax to 303.989.6457.

**Drops may NOT be made by phone.**

## Past Due

If your account is past due, you may not register for classes. Past-due accounts will be turned over to a collection agency in accordance with Colorado law, and collection costs will be added to your account balance. Past due accounts not paid by the due date may be subject to interest charges at 8% per year in accordance with Colorado law. Your delinquency will be reported to national credit bureaus. You will not be issued a transcript. The charge for a returned payment is \$25. If your check is returned by your bank, you will be required to pay in cash, by certified funds, or with a credit or debit card, at the Cashier's Office at the Lakewood Campus.

## Monthly Installment Payment Plan

If you are taking at least four credits, you can sign up online for the Installment Tuition Payment Plan. You must enroll in the plan at the beginning of each semester that you would like to pay in installments. Monthly payments may be made using Visa, MasterCard, Discover, American Express, or by automatic withdrawal from a checking or savings account. There is a nonrefundable \$25 enrollment fee for each term in which you enroll. Returned payment charges apply for any payments returned by your bank. Check the Web site at [www.rccc.edu/tuition](http://www.rccc.edu/tuition) to familiarize yourself with the plan and to enroll. If you are under 18, your parent or legal guardian must sign.

### When to Apply for the Payment Plan

Your tuition and fees will be divided into multiple payments depending upon when you sign up for the monthly payment plan. You must pay your balance due in full before registering for classes for the following term.

Please be sure to keep your budgeted balance up-to-date with the payment plan processor and be sure to check your bill throughout the term to ensure your payments are correctly posted to your student account.

## Refund Policy

- Refunds of payments made by credit card are first refunded to the original payment credit card.
- All remaining refunds are processed according to the refunding preference you selected on the HigherOne Web site.
- Through HigherOne, you may select an electronic deposit to your existing checking or savings account or you may choose to set up a new bank account with HigherOne. You may also choose to receive a paper check in the mail directly from Higher One, at your address on record with Admissions. Be sure to keep your address up to date.
- If you do not choose a refunding preference, you will receive your refund via paper check mailed to your address on file with RRCC, approximately 21 days after your batch refund posts to your student account.
- For more information about the HigherOne refunding process, check out: [www.rccc.edu/tuition/refund.htm](http://www.rccc.edu/tuition/refund.htm).
- Your refund will not include Barnes and Noble bookstore charges for items you purchased at the bookstore, the \$25 Installment Tuition Payment Plan fee, or materials fees. Tuition and student fees will be refunded. The \$11.45 registration fee will be fully refunded if all classes are dropped by the deadlines published for each term on page 3 or online.
- Only classes dropped by the course drop/refund date are eligible for refund.

▶ **Do not assume you will be dropped for not attending class or missing payment deadlines.**

You are responsible for dropping your classes. Drop dates may vary by class. Please review the schedule to ensure you know the specific date applicable to each course in which you are enrolled. If you do not drop your class by the date noted in the schedule, you are responsible for the full cost of the course.

- If a course is cancelled by the college, you are eligible for a 100 percent refund of tuition and fees. Your refund will be issued as noted above.
- Please check with the Bookstore regarding any textbook refunds.

[cashiers.office@rccc.edu](mailto:cashiers.office@rccc.edu) or 303.914.6222

## Financial Aid

All Red Rocks students are encouraged to apply for financial aid. The first step to receive financial aid is to submit a Free Application for Federal Student Aid (FAFSA) for the appropriate academic year.

The process takes 6-8 weeks, so apply early! The results of the FAFSA application will help the Financial Aid Office at Red Rocks Community College determine the type and amount of aid you will be eligible for. We must receive the results of this application before you will be considered for any federal or state financial aid. You are encouraged to check your My Community Education account online for additional requirements and financial aid status.

### How to Submit the FAFSA:

Apply online at [www.fafsa.ed.gov](http://www.fafsa.ed.gov) using RRCC's school code of 009543.

You and your parents (if you are considered a dependent student – see FAFSA dependency status questions) may want to apply for a Personal Identification Number (PIN) before starting the application. You will use the PIN to electronically sign it once you finish. The link to apply for a PIN is in the "Before Beginning a FAFSA" section of the FAFSA Web site.

If you need assistance completing the FAFSA, contact the RRCC Financial Aid Office to arrange an appointment with an Educational Opportunity Center (EOC) representative.

Although applications for financial aid can be submitted throughout the year, priority dates have been established so that awarding can be completed before the first day of classes. If you have been awarded financial aid by the first day of classes, you can expect to have the aid credited to your account shortly after the drop/refund date. Any funds remaining after the total bill is paid will be issued to your HigherOne Debit Card.

### To receive aid for:

Summer 2011  
Fall 2011  
Spring 2012  
Summer 2012  
Fall 2012  
Spring 2013

### Apply by:

Feb. 1, 2011  
April 1, 2011  
Sept. 1, 2011  
Feb. 1, 2012  
April 1, 2012  
Sept. 1, 2012

You must apply for admission to RRCC to be eligible for financial aid. You will be notified by mail about your financial aid status.



*The Red Rocks Financial Aid Department will work with you personally to insure you receive all the financial aid for which you are qualified.*

## Scholarships

Red Rocks Community College offers scholarships through Financial Aid, the Red Rocks Community College Foundation, High School Relations, and Student Employment and Internship Services. Scholarships may be awarded based on merit, financial need, or affiliation with an organization or group. Each of these scholarships has different criteria and deadlines, but all are available to qualified RRCC students. To learn more about scholarships and their requirements, contact one of the offices below.

### RRCC Financial Aid

303.914.6256  
[www.rrcc.edu/finaid](http://www.rrcc.edu/finaid)

### RRCC Foundation

303.914.6308  
[www.rrcc.edu/foundation](http://www.rrcc.edu/foundation)

### High School Relations

303.914.6350  
[www.rrcc.edu/hs](http://www.rrcc.edu/hs)

### Student Employment and Internship Services

303.914.6258  
[www.rrcc.edu/jobwatch](http://www.rrcc.edu/jobwatch)

## Bookstore



The Red Rocks Bookstore, located at the Lakewood campus, is your source for new and used textbooks (including books for CConline classes) reference books, dictionaries, test preps, study aids, and best-selling paperbacks.

The bookstore also carries school supplies, calculators, backpacks, greeting cards, Red Rocks gift and clothing items, as well as snack foods and beverages. Barnes and Noble gift cards are also available. Bookstore services include special orders for books not in stock, limited check cashing and UPS shipping.

The Bookstore will buy back used textbooks at the end of semester if they are being used again in the next semester. Textbooks may be ordered online by clicking on "Bookstore" at the Red Rocks Web site, [www.rrcc.edu](http://www.rrcc.edu). Books may be shipped to students' homes, held for in-store pickup, or delivered to the Arvada campus. Payment is accepted by cash, check (with proper I.D.), Visa, MasterCard, Discover, American Express, Student Financial Aid and Barnes & Noble Gift Card. Receipts are always required for returns. Please refer to signs in the bookstore for refund policies and time limits.

**Information: 303.914.6232**  
[rrcc.bkstore.com](http://rrcc.bkstore.com)

## Campus Police



The Campus Police Department keeps our campuses secure by responding to medical emergencies, investigating criminal acts, auto accidents, and enforcing traffic regulations.

Officers also open and close campus buildings, provide safety escorts when needed, provide vehicle battery jump-starts,

and deliver emergency messages. A 911 Communications Center takes calls and sends officers and security guards to the requested location for service.

Campus Police is also the location for lost and found items and we are located behind the Information Desk at the main entrance of the Lakewood Campus

**Emergency Dispatch: 911**  
**Non-emergency Dispatch: 303.914.6394**

## Career Resources

[www.rrcc.edu/careercenter](http://www.rrcc.edu/careercenter)

### Career Counseling & Coaching

Individual appointments to discuss career exploration, options and resources.

### Career Assessments

Red Rocks offers individual appointments for the Myers-Briggs and Strong Interest Inventory career assessments. Assessments are \$20 each for students and alumni, or \$30 each for community members.

### College in Colorado Career Resources

This free online career resource from College in Colorado is available to all students and community members. Included are free skills, values and interest assessments, occupational and salary information, resources to locate degree and certificate programs by college, occupational videos and additional resources such as a resume builder. To access: [www.collegeincolorado.org](http://www.collegeincolorado.org), and choose Career Planning.

### Career Development Course

PSY 110, Career Development is offered each fall and spring semester as a hybrid course on Tuesday nights from 6-7:30 pm and online each summer semester.

PSY 110 covers all areas of the career development process, including formal and informal career assessments and activities (personality, values, interests, skills, strengths, and beliefs), personal career exploration, occupational, labor and job market resources, the changing global workplace, goal setting, decision making, networking, informational interviewing, resume writing and interviewing skills. Upon completion students will have a clearer understanding of themselves, their role in the workplace and will create their own career action plan.

**Information: Dan Macy 303.914.6016**  
or [dan.macy@rrcc.edu](mailto:dan.macy@rrcc.edu)



## Child Care

Red Rocks Community College is home to Child Care Innovations, a Child Care Resource and Referral Agency. Parents looking for child care may visit room 2666 at the Lakewood campus or call

1.877.338.2273 for free referrals of licensed child care facilities, assistance in evaluating options and helpful consumer education information. To conduct a search online, visit [www.qualistar.org](http://www.qualistar.org).

The Children's Center at the Lakewood campus offers full-service, full-day care for children from 18 months to kindergarten entry. The high-quality program provides secure and nurturing care. The center serves families of students, staff, faculty, and the community. The center does not provide drop-in care.

**Information: 303.914.6328**  
[www.rrcc.edu/childcare](http://www.rrcc.edu/childcare)

## Student Employment and Internship Services



### Student Employment

Job search assistance is available to current and former students. A wide range of full-time, part-time and temporary job listings is posted in Student Employment at the Lakewood campus, as well as information on work-study employment, resume preparation and on-campus employment recruiting.

### Internship Services

Work experience in your field of study enhances what you learn in the classroom. Through the Red Rocks Internship Program, you can gain experience for your resume and earn college credit while working with local employers.

**Information: 303.914.6258**  
[www.rccc.edu/jobwatch](http://www.rccc.edu/jobwatch)

## Students with Disabilities

Red Rocks fully supports Section 504 of the Rehabilitation Act of 1973, with amendments of 1974, as well as the Americans with Disabilities Act (ADA) of 1990 and the ADA Amendment Act of 2008, regarding nondiscrimination based on disability. Reasonable accommodation will be provided based on appropriate documentation.

The Office of Disability Services provides advocacy, assessment, direction, and learning skills for individuals with physical, cognitive, psychological or other types of disabilities. Resources include disability services, an Assistive Technology lab, interpreting and individual assistance with advising, vocational assessment, career planning, academic support and tutoring. If you have a disability and require an accommodation to participate in any class, program, service or other activity at Red Rocks, contact the Office of Disability Services.

**Information: 303.914.6733 or 303.914.6737 TTY [www.rccc.edu/disabilityservices](http://www.rccc.edu/disabilityservices)**



## (LARC) Learning and Resource Center

The LARC is a welcoming place where students can study on their own or meet with a tutor, a study group, or their instructor. The LARC is equipped with Internet accessible computers and computer applications to help you complete coursework or participate in online classes. Walk-in tutoring in a variety of subjects is free to RRCC students.

### Lakewood LARC Hours

**303.914.6705**

Monday to Thursday	8 a.m. to 7 p.m.
Friday and Saturday	8 a.m. to 4 p.m.
Sunday	CLOSED

*(Hours vary during summer semester)*

### Arvada LARC Hours

**303.914.6010**

Monday to Thursday	8 a.m. to 9 p.m.
Friday	8 a.m. to 5 p.m.*
Saturday	8 a.m. to 5 p.m.*
Sunday	CLOSED

*\* Hours vary during weekend college. Please call our front desk at 303.914.6010 for Fri/Sat. hours*

**Information: [www.rccc.edu/larc](http://www.rccc.edu/larc)**

## RRCC Lakewood Library

The library offers numerous resources intended to aid students here at Red Rocks. Many of Student Life's study groups are hosted in the library because the library has laptops, wireless internet, and ample space for study or just relaxing. An extensive collection of journals, magazines, and online databases is constantly maintained and developed to keep up with the evolving needs of today's college students. In addition, our 32 computers are all attached to a central printer that offers students 20 free pages of printing every day.

### Library Hours

Monday to Thursday	8 a.m. to 7 p.m.
Friday	9 a.m. to 4 p.m.
Saturday	10 a.m. to 2 p.m.
Sunday	CLOSED

**Information: 303.914.6740**

**[www.rccc.edu/library](http://www.rccc.edu/library)**



## Associate of Arts

### Transfer degree

The associate of arts degree (60 credits) is for the student who intends to transfer to a four-year college or university. The AA curriculum consists of transferable general education classes in communication, math, physical and life sciences, arts and humanities, and social and behavioral science, as well as approved elective classes. Follow our catalog recommendations

## Associate of Science

### Transfer degree

The associate of science degree (60 credits) is for the student who intends to transfer to a four-year college or university. The AS curriculum consists of transferable general education classes in communication, math, physical and life sciences, arts and humanities, and social and behavioral science, as well as approved elective classes. Eighteen of your approved elective credits must be in math or science. Follow our catalog recommendations for specific areas of study.

## Associate of General Studies – Specialist

### Articulated transfer degree

The associate of general studies-specialist degree (60 credits) is for the student who wants to complete the associate of arts core general education transfer course requirement and have an emphasis in a career-oriented program of study.

## Associate of General Studies – Generalist

The associate of general studies-generalist degree (60 credits) is for the student who wants to complete a combination of college-level general education courses and a variety of vocational courses. Courses are considered for transfer on an individual basis by the receiving four-year college or university.

## Associate of Applied Science

The associate of applied science degree (60-75 credits) is for the student who is preparing for entry-level employment through a career-oriented program of study or is upgrading skills for a specific occupation. This degree is not intended for transfer. Various courses within this degree may be accepted into a four-year institution although they are considered for transfer on an individual basis by the receiving university. Faculty advisors are available in each course of study to guide you through your degree plan.

## Certificates

Certificates ranging from 5 to 30 credits are available in certain programs. Read the RRCC catalog or Web site for specific programs. Faculty advisors are available in each course of study to guide you through your certificate plan.

---

## Prerequisite Requirements

Registration for all GTPathways freshmen level (100 level) and higher courses require successful completion of ENG 090 (grade "C" or higher) or equivalent assessment scores (Accuplacer 95, ACT English 18).

**Transferring to a Colorado public or private four-year institution.**

Many of your Red Rocks courses will transfer. Please consult with a Red Rocks academic advisor, as well as a transfer counselor at the institution you wish to attend, to verify your course choices.

**Generally,**

**if you**

- complete your AA or AS degree and earn a "C" or higher in each course,

**then**

- at least 60 credits of your AA or AS degree will transfer upon admission, to a degree program in a Colorado four-year college or university.

**and**

- you may finish your bachelor degree upon completion of another 60 credits.

Meet with your transfer advisor as soon as possible for a list of applicable degrees. Special articulation agreements for degrees such as, Teacher Education, Business, and Engineering have specific lower-division course requirements.

Certain majors require essential lower-division courses. Please meet with an advisor for information about obtaining a transfer guide that will help you select lower-division courses to finish your bachelor degree.

Credit earned for prior learning, Advanced Placement, correspondence courses, CLEP, and other credit from "testing out" of a course may not apply. The institution to which you transfer will evaluate these credits according to its policies.

Visit [www.rccc.edu/transfer](http://www.rccc.edu/transfer) for more information and a list of Guaranteed Transfer Core classes.

**Associate of Arts Degree**

**General education transfer requirements:  
38–42 credits**

- Communication: 9 credits\*
- Mathematics: 3–5 credits
- Physical and Life Sciences: 8–10 credits
- Social and Behavioral Sciences: 9 credits, including at least one history course and no more than two courses from any one discipline
- Arts and Humanities: 9 credits, with no more than two courses from any one discipline

**Additional requirement: 18–22 hours of approved transferable electives\*\***

**Total required credits: 60**

- \* Communication is an RRCC specific graduation requirement.
- \*\* Please meet with an advisor for a list of the approved elective courses for the associate of arts degree.

**Associate of Science Degree**

**General education transfer requirements:  
38–42 credits**

- Communication: 9 credits\*
- Mathematics: 3–5 credits
- Physical and Life Sciences: 8–10 credits
- Social and Behavioral Sciences: 9 credits, including one history course and no more than two courses from any one discipline
- Arts and Humanities: 9 credits, with no more than two courses from any one discipline

**Additional requirement: 18–22 hours of approved transferable electives\*\* (18 of which must be approved math or science courses)**

**Total required credits: 60**

- \* Communication is an RRCC specific graduation requirement.
- \*\* Please meet with an advisor for a list of the approved elective courses for the associate of science degree.

**RRCC has transfer agreements with the following colleges:**

- Adams State College
- Colorado Christian University
- Colorado College
- Colorado School of Mines
- Colorado State University-Pueblo
- Colorado State University-Ft. Collins
- Colorado Technical University
- CU at Boulder
- CU at Denver
- CU Health Sciences
- CU at Colorado Springs

- DeVry University
- Fort Hays State University
- Fort Lewis College
- Franklin University
- Jones International University
- Metropolitan State College
- Mesa State College
- Naropa University
- Northwest Missouri State University
- University of Phoenix
- Regis University

- Rocky Mountain College of Art and Design
- Saint Francis University
- United States Air Force Academy
- University of Denver/Daniels School of Business
- University of Northern Colorado
- Western Governors University
- Western State College

# General Education State Guaranteed Transfer Courses

(Check with an advisor for additional courses. These courses are guaranteed to transfer to private and public Colorado colleges with at least a "C" or higher grade in each course.)

**Registration for all GTPathways freshmen level (100 level) and higher courses require successful completion of ENG 090 (grade "C" or higher) or equivalent assessment scores (Accuplacer 95, ACT English 18).**

## Communication - 3 courses (9 credits)

ENG 121 English Composition I (3)  
ENG 122 English Composition II (3)  
COM 115 Public Speaking (3)  
or COM 125 Interpersonal Communication  
• Communication is a CCCS (Colorado Community College System) requirement and is in addition to the Statewide Guaranteed (GT) transfer courses

## Mathematics - 1 course (3-5 credits)

MAT 120 Mathematics for the Liberal Arts (4)  
MAT 121 College Algebra (4)  
MAT 122 College Trigonometry (3)  
MAT 123 Finite Math (4)  
MAT 125 Survey of Calculus (4)  
MAT 135 Introduction to Statistics(3)  
MAT 155/156 Integrated Math I/II (3/3)  
(Both must be taken to satisfy math credit.  
Recommended for Teacher Education only.)  
MAT 166 Pre-Calculus (5)  
MAT 201 Calculus I (5)  
MAT 202 Calculus II (5)  
MAT 204 Calculus III with Engineering Applications (5)  
MAT 261 Differential Equations with Engineering Applications (4)

## Arts and Humanities - 3 courses (9 credits)

Select 3 courses, with no more than 2 courses from any 1 category.

### • Arts and Expression

ART 110 Art Appreciation (3)  
ART 111 Art History Ancient to Medieval (3)  
ART 112 Art History Renaissance to Modern (3)  
ART 207 Art History - 1900 to Present (3)  
DAN 125 History of Dance I (3)  
MUS 120 Music Appreciation (3)  
MUS 121 Music History I (3)  
MUS 122 Music History II (3)  
MUS 123 Survey of World Music (3)  
MUS 125 History of Jazz (3)  
THE 105 Theatre Appreciation (3)  
THE 211 Development of Theatre I (3)  
THE 212 Development of Theatre II (3)

### • Literature and Humanities

HUM 115 World Mythology (3)  
HUM 121 Humanities: Early Civilization (3)  
HUM 122 Humanities: Medieval to Modern (3)  
HUM 123 Humanities: The Modern World (3)  
LIT 115 Introduction to Literature (3)  
LIT 201 Masterpieces of Literature I (3)  
LIT 202 Masterpieces of Literature II (3)  
LIT 205 Ethnic Literature (3)  
LIT 211 Survey of American Literature I (3)  
LIT 212 Survey of American Literature II (3)  
LIT 221 British Literature I (3)  
LIT 222 British Literature II (3)  
LIT 225 Introduction to Shakespeare (3)  
LIT 268 Celtic Literature (3)

### • Ways of Thinking

PHI 111 Introduction to Philosophy (3)  
PHI 112 Ethics (3)  
PHI 113 Logic (3)  
PHI 114 Comparative Religion (3)  
PHI 214 Philosophy of Religion (3)  
PHI 218 Philosophy of the Environment (3)

### • Foreign Languages

(Must be intermediate/200-level)  
FL 211 Second Year Foreign Language (3) FRE, GER, ITA, JPN, RUS, SPA  
FL 212 Second Year Foreign Language (3) FRE, GER, ITA, JPN, RUS, SPA

### Social and Behavioral Science - 3 courses (9 credits)

Select 3 courses, 1 of which must be history, with no more than 2 courses from any 1 category.

### • History

HIS 101 History of Western Civilization I (3)  
HIS 102 History of Western Civilization II (3)  
HIS 111 World Civilization I (3)  
HIS 112 World Civilization II (3)  
HIS 201 U.S. History I (3)  
HIS 202 U.S. History II (3)  
HIS 215 Women in History (3)  
HIS 225 Colorado History (3)  
HIS 244 History of Latin America (3)  
HIS 247 Contemporary World History (3)

### • Economic & Political Systems

ECO 101 Economics of Social Issues (3)  
ECO 201 Macro Economics (3)  
ECO 202 Micro Economics (3)  
ECO 245 Environmental Economics (3)  
POS 105 Introduction to Political Science (3)  
POS 111 American Government (3)  
POS 125 American State and Local Gov. (3)  
POS 205 International Relations (3)  
POS 225 Comparative Government (3)

### • Geography

GEO 105 World Regional Geography (3)  
GEO 106 Human Geography (3)

### • Human Behavior, Cultural & Social Frameworks

ANT 101 Cultural Anthropology (3)  
ANT 107 Introduction to Archaeology (3)  
ANT 111 Physical Anthropology (3)  
ANT 215 Indians of North America (3)  
JOU 105 Introduction to Mass Media (3)  
PSY 101 General Psychology I (3)  
PSY 102 General Psychology II (3)  
PSY 205 Psychology of Gender (3)  
PSY 217 Human Sexuality (3)  
PSY 226 Social Psychology (3)  
PSY 227 Psychology of Death and Dying (3)  
PSY 235 Human Growth & Development (3)  
PSY 238 Child Development (3)

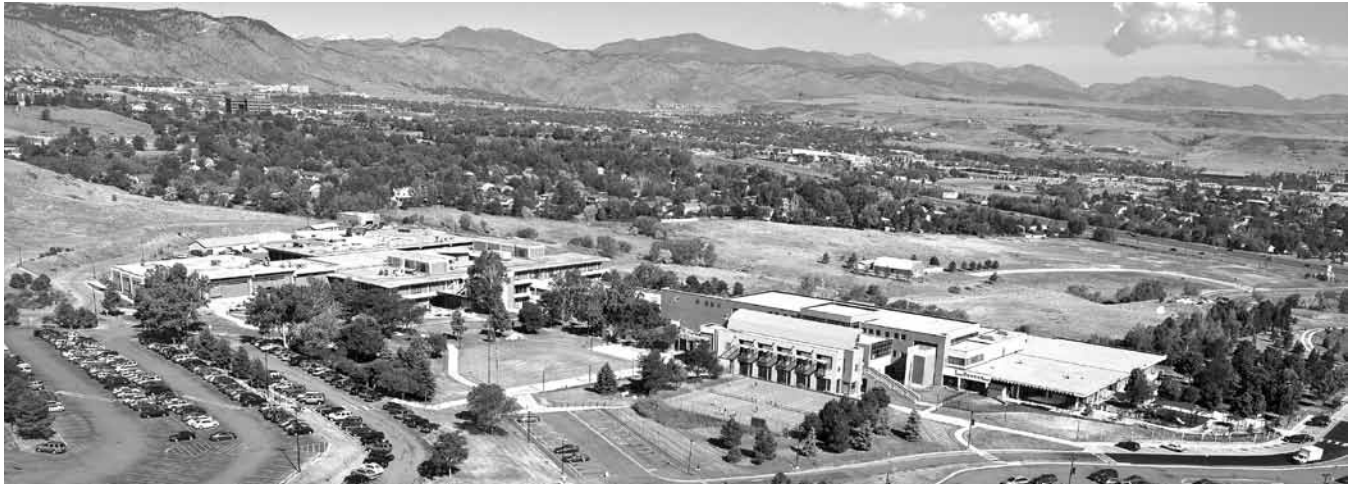
PSY 240 Health Psychology (3)  
PSY 249 Abnormal Psychology (3)  
SOC 101 Introduction to Sociology I (3)  
SOC 102 Introduction to Sociology II (3)  
SOC 205 Sociology of Family Dynamics (3)  
SOC 207 Environmental Sociology (3)  
SOC 215 Contemporary Social Problems (3)  
SOC 216 Sociology of Gender (3)  
SOC 218 Sociology of Diversity (3)  
SOC 220 Sociology of Religion (3)  
SOC 231 Sociology of Deviant Behavior (3)

### Physical and Life Sciences - 2 courses (8-10 credits)

Additional credits beyond 8 apply as electives toward AA degree.

AST 101 Astronomy I (4)  
AST 102 Astronomy II (4)  
BIO 105 Science of Biology (4)  
BIO 111 General College Biology I w/Lab (5)  
BIO 112 General College Biology II w/Lab (5)  
BIO 201 Anatomy & Physiology I (4)  
BIO 202 Anatomy & Physiology II (4)  
BIO 204 Microbiology (4)  
BIO 208 General College Microbiology (5)  
BIO 220 General Zoology (5)  
BIO 221 Botany: GT-SC1 (5)  
CHE 101 Introduction to Chemistry I (5)  
CHE 102 Introduction to Chemistry II: GT-SC1 (5)  
CHE 111 General College Chemistry I (5)  
CHE 112 General College Chemistry II (5)  
ENV 101 Environmental Science (4)  
GEO 111 Physical Geography: Land (4)  
GEO 112 Physical Geography: Weather and Climate (4)  
GEY 111 Physical Geology (4)  
GEY 121 Historical Geology (4)  
MET 150 General Meteorology (4)  
PHY 105 Conceptual Physics (4)  
PHY 107 Energy Science and Technology (4)  
PHY 111 Physics: Algebra-Based I w/Lab (5)  
PHY 112 Physics: Algebra-Based II w/ Lab (5)  
PHY 211 Physics: Calculus-Based I w/Lab (5)  
PHY 212 Physics: Calculus-Based II w/Lab (5)  
SCI 155/156 Integrated Science I/II (4/4) (Both must be taken to satisfy science credit.  
Recommended for Teacher Education only.)

Note: If you take more than the required number of credits in the Science or Mathematics categories, those additional credits can be used as electives for both the Associate of Arts and Associate of Science degrees. \* Fulfills core requirements for Associate of Arts, but not Associate of Science degree. Some courses not offered at RRCC.



**Admissions\***

**303.914.6348**

Monday - Thursday 8 a.m. - 6 p.m.  
Friday 9 a.m. - 5 p.m.

**Room 1303**

**Financial Aid Office**

**303.914.6256**

Monday - Thursday 8 a.m. - 6 p.m.  
Friday 9 a.m. - 5 p.m.

**Room 1331**

**Advising\***

**303.914.6255**

Monday - Thursday 8 a.m. - 6 p.m.  
Friday 9 a.m. - 5 p.m.

**Room 1303**

**Foundation**

**303.914.6308**

Monday - Friday 8 a.m. - 5 p.m.

**Room 1003**

**Arvada Campus**

**303.914.6010**

Monday - Thursday 8 a.m. - 9 p.m.  
Friday 8 a.m. - 10 p.m.\*\*  
Saturday 8 a.m. - 5 p.m.  
Sunday Closed

**Front Desk**

**High School Relations**

**303.914.6350**

Monday - Thursday 8 a.m. - 6 p.m.  
Friday - 9 a.m. - 5 p.m.

**Room 1303**

**Assessment Center\***

**303.914.6720**

Monday - Thursday 9 a.m. - 6 p.m.  
Friday 9 a.m. - 5 p.m.

Please see [www.rrcc.edu/assessment](http://www.rrcc.edu/assessment) for dates of extended hours for Academic Testing

**Please call 303.914.6010 for Arvada Testing Hours**

**Room 1320**

**Office of Special Services**

**303.914.6733**

Mondays - Thursday 8 a.m. - 5 p.m.  
Fridays 8 a.m. - 4 p.m.

Contact the office for evening and weekend hours

**Room 1182**

**Student Life Desk**

**303.914.6370**

Monday - Thursday 9 a.m. - 7 p.m.  
Friday 9 a.m. - 5 p.m.  
Saturday 10 a.m. - 2 p.m.

**Room 1550**

**Bookstore**

**303.914.6232**

Monday - Thursday 8 a.m. - 7 p.m.  
Friday 8 a.m. - 4 p.m.  
Saturday 9 a.m. - 1 p.m.

**Room 1596**

**Student Employment & Internship**

**Services**

**303.914.6258**

Monday - Thursday 8 a.m. - 6 p.m.  
Friday 8 a.m. - 5 p.m.

**Room 1659**

**Cashier**

[cashiers.office@rrcc.edu](mailto:cashiers.office@rrcc.edu)

**303.914.6222 (Voice Mail)**

Monday - Thursday 9 a.m. - 6 p.m.  
Friday 9 a.m. - 5 p.m.

**Room 1221**

**Student Project Center**

**303.914.6548**

Monday - Thursday 8 a.m. - 9 p.m.  
Friday 8 a.m. - 6 p.m.  
Saturday - Sunday 10 a.m. - 4 p.m.

**Room 1551**

**English Language/Intercultural Services**

**LARC -**

**303.914.6416**

Monday - Friday 8:30 a.m. - 5 p.m.

**Rooms 1260 and 1262**

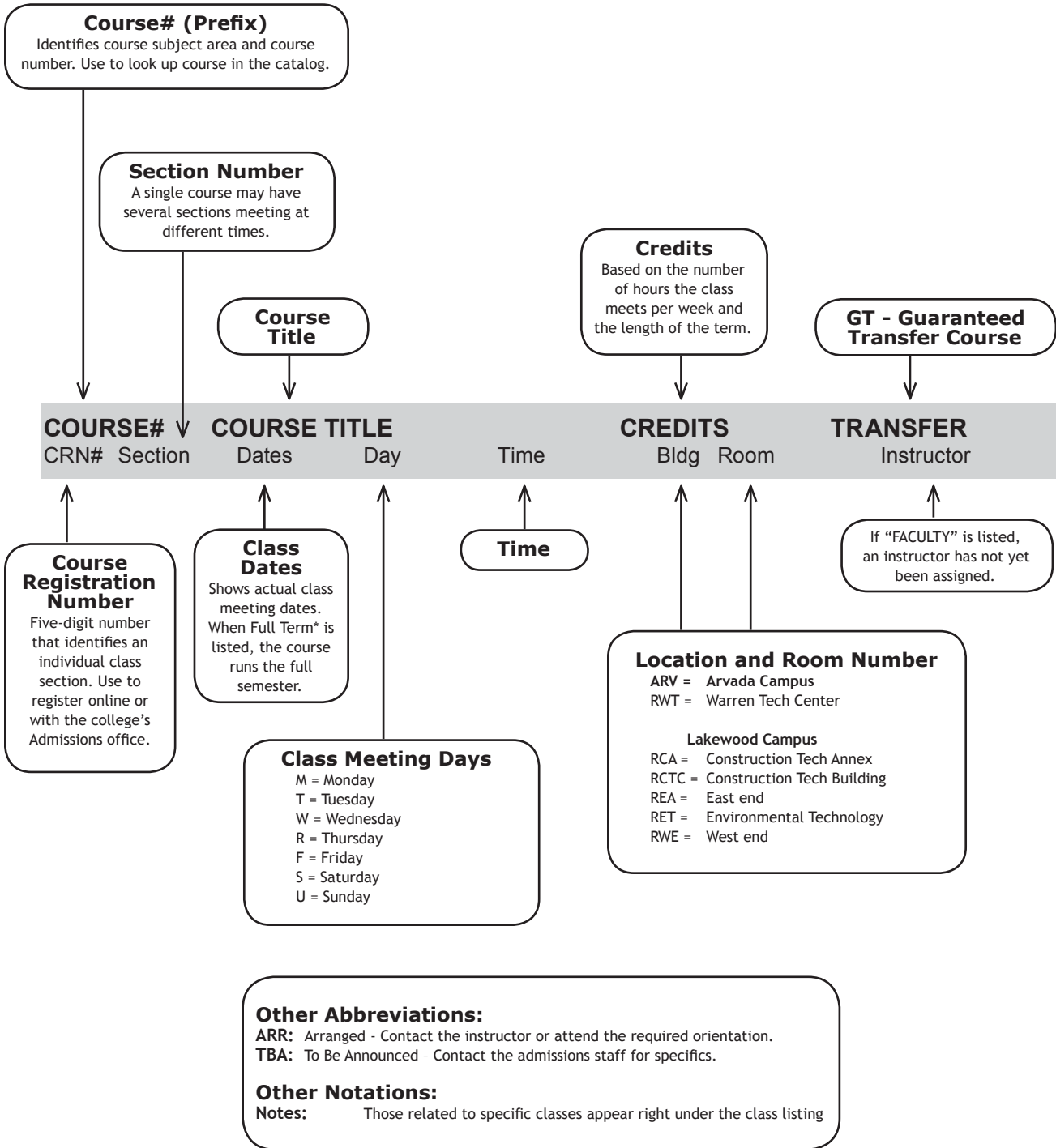
**Student Records**

**303.914.6353**

Monday - Thursday 8 a.m. - 6 p.m.  
Friday 9 a.m. - 5 p.m.

**Room 1200**

\* Also available at the Arvada campus. Hours vary during Weekend College.  
All location hours are subject to change; please call to confirm.



Programs approved by the State Board for Community Colleges and Occupational Education and Colorado Community College System, 9101 E. Lowry Blvd., Building #959 • Denver, CO 80230 • Information: 303.620.4000

Accredited by the Higher Learning Commission of the North Central Association of Colleges and Schools, 30 N. LaSalle St., Suite 2400, Chicago, IL 60602-2504 • Information: 1.800.621.7440



# From RED ROCKS Community College to... HARVARD!

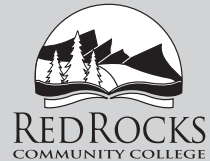
*Student Lauren Goh took advantage of RRCC's Concurrent Enrollment program and transferred to Harvard University with a 4.0 GPA!*



## Define Your Success!

Pursue a degree in a high-demand field, equip yourself with the knowledge to succeed, or take general education courses and transfer to a four-year college. No matter which path you choose, Red Rocks Community College can help you get where you want to go.

[www.rrcc.edu/hs](http://www.rrcc.edu/hs)



## Managing college expenses doesn't have to be difficult

**Let us help you find ways to lighten your financial load**

When it comes to managing your college finances, Wells Fargo has all kinds of tools to help you make smart decisions. Whether you're planning for books and tuition or budgeting for a semester's worth of pizza, learning how to manage your money and use it wisely is simple. And it starts with *College Comba*®. Check it out online at [wellsfargo.com/backstage](http://wellsfargo.com/backstage)

© 2010 Wells Fargo Bank, N.A.  
All rights reserved. Member FDIC. (131370\_00390)



## Earn a Holistic Health Professional Certificate

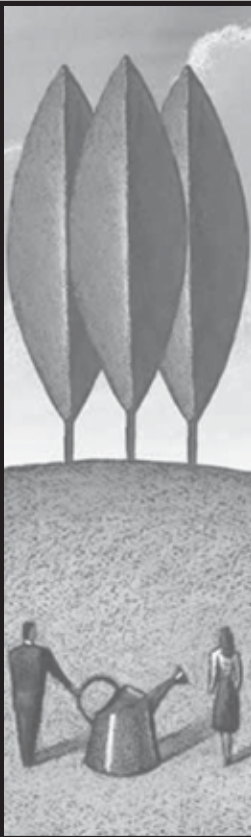
*Courses offered days, evenings, and weekends*



*Reiki • Herbology • Aromatherapy • Reflexology • And More*

Call today to learn more  
303-914-6462





Tax Preparation and Planning  
Audit and Accounting  
Services  
Estate Planning  
Cash Management  
Business Succession  
Planning  
Advisory Services



**BRADLEY CONSULTING GROUP**  
CERTIFIED PUBLIC ACCOUNTANTS  
LISTEN. LEARN. ADVISE.

225 Union Boulevard Suite 450  
Lakewood, CO 80228  
www.bcgpc.com • 303-988-1900

## Open a Student Account Package Today

Let FirstBank ease you into the 'real world'  
with all these great benefits:

- Free Checking Account
- Free Regular Savings Account with no minimum balance for five years\*
- Free Internet Banking with eStatements
- No Fees for ATM withdrawals\*
- Parents may transfer from their FirstBank account to your FirstBank Student Account

Visit *FirstBank* online or in person  
to open your new *Student Account*  
Package

[efirstbank.com](http://efirstbank.com)



\*Certain restrictions apply. Regular Savings accounts have a \$100 minimum balance requirement after five years to avoid a quarterly service charge. Customers may still be charged a fee by the owner of the non-FirstBank ATM. Member FDIC.

# GILPIN COUNTY

congratulates

**RED ROCKS**

**COMMUNITY COLLEGE**

on **40 years** of educational excellence.





# JOHNSON & WALES

## UNIVERSITY

✓ JWU's pioneering approach to academics combines classroom education with industry-specific skills. The campus's 16 academic programs, alongside numerous concentrations and minors, blend the theoretical with the practical and are designed with industry input. The key is that you'll graduate with the knowledge and skills employers are seeking.



✓ Take advantage of every opportunity to explore the world before you graduate by considering the range of over 30 study abroad programs. JWU students can take advantage of studying abroad every year of their education at the university.



✓ JWU is dedicated to making education as accessible and affordable as possible. The university has taken proactive steps to lower student debt, including increasing institutional aid to \$120 million for the 2010 – 2011 academic year. This includes scholarships to high-achieving Phi Theta Kappa students.



✓ "Wildcat Fever" is certainly tangible at the university. JWU's student-athletes are building a legacy of success of which the entire institution is proud through six varsity and multiple club teams that compete throughout Colorado and the region.



✓ Now check out JWU at: [www.jwu.edu/denver](http://www.jwu.edu/denver)

College of Business • College of Culinary Arts • The Hospitality College