



All events listed in the John Letter are open and FREE for Current Students unless otherwise noted!

THE JOHN LETTER

STUDENT ACTIVITIES FOR THE WEEK OF SEPTEMBER 26TH - OCTOBER 2ND, 2016

E-mail your items to Terry.Hutchinson@rrcc.edu. Deadline is Wednesday at Noon prior to the week of publication.



Please do NOT take me with you! If you would like a copy of this weeks john letter please print one from the rock: <http://www.rrcc.edu/student-life/student-publications> or see the Student life desk.

Student Life Hours of Operation

Student Project Center:
 Monday - Thursday: 8:00 a.m. - 9:00 p.m.
 Friday: 8:00 a.m. - 6:00 p.m.
 Saturday & Sunday 10:00 a.m. - 4:00 p.m.
 Color printing available during student life desk hours.

(50¢ per page, 8 page limit)

Student Life Desk:
 Monday - Thursday: 9:00 a.m. - 6:00 p.m.
 Friday: 9:00 a.m. - 5:00 p.m.
 Saturday: 10:00 a.m. - 2:00 p.m.

The Den:
 Monday - Thursday 11:00 a.m. - 7:00 p.m.

Fitness center:
 Monday: 6:00 a.m. - 9:00 p.m.
 Tuesday: 6:00 a.m. - 6:00 p.m.
 Wednesday: 6:00 a.m. - 6:00 p.m.
 Thursday: 6:00 a.m. - 9:00 p.m.
 Friday: 6:00 a.m. - 6:00 p.m.
 Saturday: 10:00 a.m. - 4:00 p.m.

Student Life Activities

Monday, September 26th

VP's on the Bridge

Stop by interactive tables to chat with Vice Presidents from RRCC departments. Monday, September 26th, 12:00-1:00 PM on the Bridge.

Messages on Climate Change

Come to an open forum to discuss the relevant issue of climate change. Have your voice heard! Hosted by Marie Hoerner. Monday, September 26th from 12:00-1:15 PM in the Den.

Tuesday, September 27th

Wednesday, September 28th

PTK Member Meeting

All members of Phi Theta Kappa are invited to attend a meeting on Tuesday (12:15-1:00 PM) and Wednesday (5:15 - 6:00 PM) in the Mt. Evans Room. (Room 1470)

Thursday, September 29th

MOVIE NIGHT

To Write Love On Her Arms will be presented on Thursday, September 29th at 3:00 p.m. in The Den. Pizza will be provided by Student Life! <http://www.rrcc.edu/about-us/disclaimers-and-legal-notice>



ARVADA CAMPUS

The Dr. is In

Come meet Dr. Michelle Haney, the President of Red Rocks Community College on Tuesday, September 27th 11:30 AM - 1:00 PM

Tutoring Details

Biology:
 Tuesdays (9:00 a.m. - 12:00 p.m.) & Saturdays (10:00 a.m. - 1:00 p.m.)

Math:
 Mondays & Wednesdays (10:30 - 11:30 a.m. & 10:00 a.m. - 1:00 p.m.)

Writing:
 Tuesdays & Thursdays (9:00 a.m. - 2:00 p.m.)

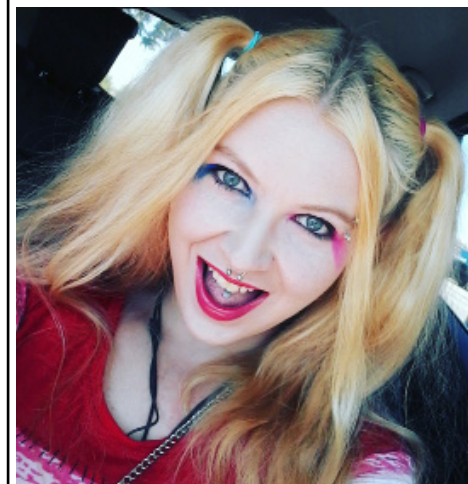
Student Food Bank

Up to 4 free items with current student ID at the Student Life Office. Tuesdays at 11:00 a.m. - 1:00 p.m. & Wednesdays 4:00 - 6:00 p.m. (Near the Coffee Shop)

PTK Member Meeting

All members of Phi Theta Kappa are invited to attend a meeting on Wednesday, September 28th from 12:15 - 1:00 PM at Arvada Campus.

Get To Know...



Chantel H.

About:
Their major: Criminal Psychology
What made them decide that: "Serial Killers are fascinating."
What they want to be when they grow up: An actress
RRCC Club they are a part of: Psychology Club
Club Position: Vice President
Childhood Idol: Jane Goodall
Pets: 2 cats - Salem & Slash
If she had one wish it would be: To end violence
Favorite thing about RRCC: Friendly people
Favorites:
Activity: Reading, Psych Club, and dancing.
Movie: Girl Next Door
Spot on campus: The Gym
Animal: Kitties & otters
Book: Winter Girls
Season(ing): Fall & garlic

Clubs

We have clubs such as Poli-Sci, Anime Club, Engineering, Video Games, Cru, Geology, etc. Club fliers are located on the West End of the Bridge. If you are interested in joining an existing club or starting your own, please email Sara Oviatt at: sara.oviatt@rrcc.edu or Tamera Hampton at tamera.hampton@rrcc.edu

HOW LONG WILL YOU BE GONE?



Even ten minutes could be **too long** for a pet left in the car on a hot day. By then, the temperature inside the car could reach 160 ° F. That's hot enough to cause a dog to suffer heat stroke. If you see a pet in a vehicle on a hot day, please contact Campus Police at:

303 914-6394

Available at the Student Life Desk:

Student IDs - Free (replacement \$10)
 RTD 10-ride booklets - \$20
 Locker Rental - \$8
 Movie Tickets (limit 6) - \$8.50
 Postage Stamps (limit 6) - 47¢
 Photocopies - 10¢/page
 Color Prints (limit 8) - 50¢/page
 Faxes - 50¢ local, \$1 long distance

Checkout with Current ID:
 Playstation 4, Xbox 360, and Xbox One Games Ping-Pong, Basketballs, Soccer balls, Volleyballs, Tennis Equipment



Tutoring

Free tutoring is available for many classes at both the Arvada and Lakewood campus. For more details please go to: <http://www.rrcc.edu/learning-commons/tutoring>

Payroll Deadline

Biweekly Payroll: 9/17 - 9/30
 Time sheets are due Friday, 9/30 by **12:00 p.m.** Pay for the current cycle will be direct deposited on Friday, October 7th

Fortnightly Nerds Rewards

Generally, games with many players cannot be conveniently represented by tables. However, three-player games can be accommodated by constructing one table for each of player 3's actions; player 1 chooses a row, player 2 chooses a column, and player 3 chooses a table. Find all Mixed-Strategy Equilibria of the following three-player game, in which each player has 2 actions. **Please submit your answers to the office 1652 along with your name and your solution to the problem. Feel free to use your cell phone camera to keep a copy of this problem for future analysis.**

	A (pl.2)	B
A (pl.1)	1, 1, 1	0, 0, 0
B (pl.1)	0, 0, 0	0, 0, 0
	(pl.3) A	B

	A (pl.2)	B
A (pl.1)	0, 0, 0	0, 0, 0
B (pl.1)	0, 0, 0	4, 4, 4
	(pl.3) A	B