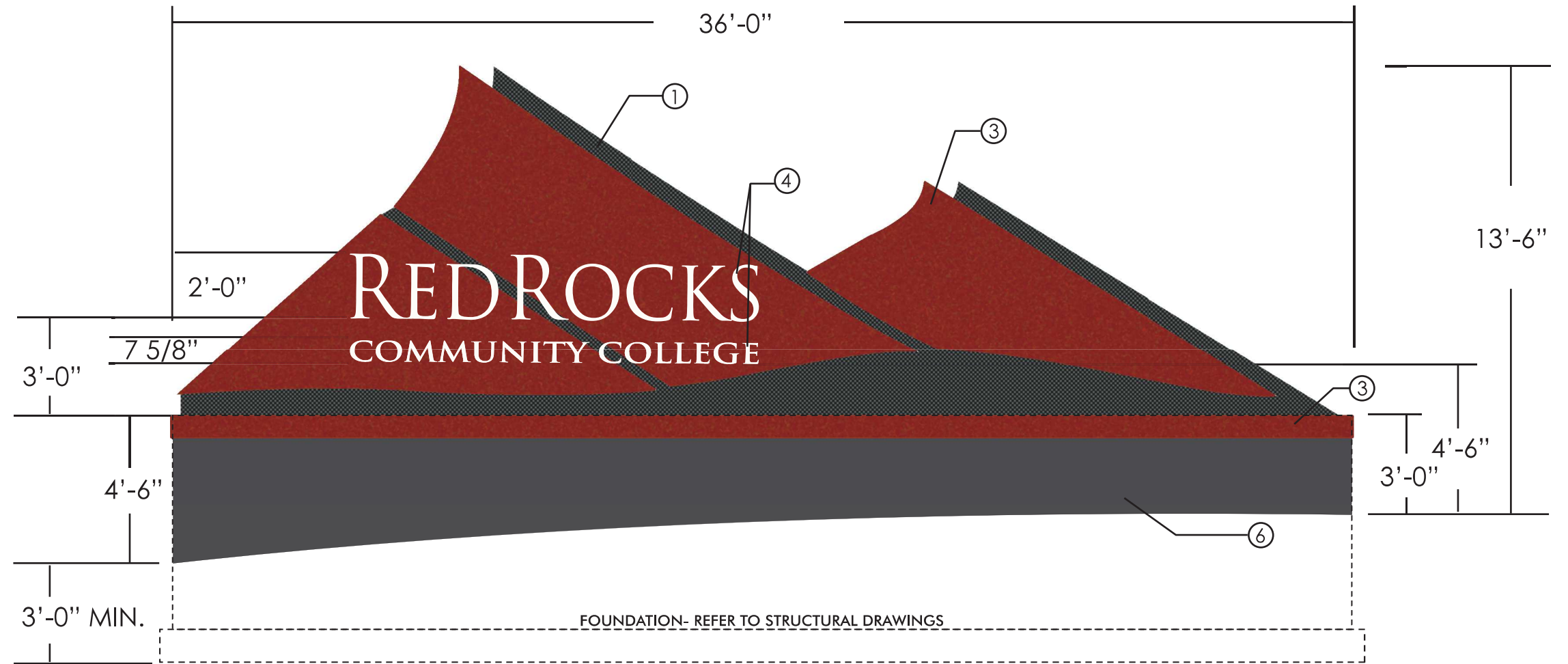


SOUTH SIDE



WEST FACE

NOTE: ALL MATERIALS AND COLORS TO BE REVIEWED AND APPROVED BY RED ROCKS COMMUNITY COLLEGE PRIOR TO FABRICATION

① POWDER COATED, PERFORATED ALUMINUM
 - 1/8" PERFORATED ALUMINUM- PATTERN TO BE DETERMINED
 - POWDER COAT TO MATCH POWDURA FLINT HAS4-C0002

② ALUMINUM STAND-OFFS, POWDER COATED OR PAINTED
 TO MATCH POWDURA FLINT HAS4-C0002

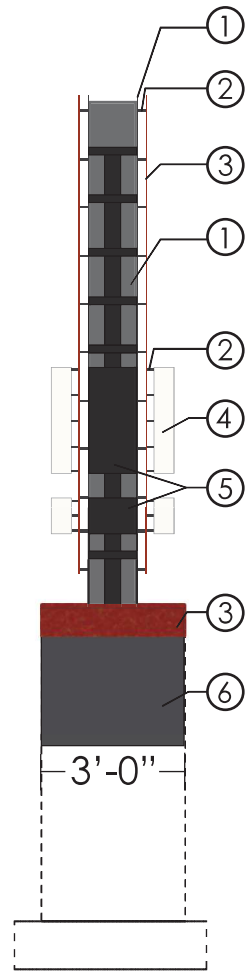
③ ALUMINUM W/ FAUX FINISHED PAINT
 1/8" ALUMINUM, PAINTED AND UV CLEAR COATED
 *FABRICATOR TO PROVIDE 5 INITIAL SAMPLES
 1ST SET: (X5) 1'-0" X 1'-0" BASED ON SAMPLES AND IMAGES PROVIDED
 2ND SET: (X3) 1'-0" X 1'-0" BASED ON OWNER INPUT FROM FIRST SAMPLE SET

REVERSE FACE OF PANELS TO BE POPULATED WITH RED OR AMBER LEDS
 - EXACT PRODUCT TO BE DETERMINED
 - LEDS TO BE HOUSED IN A UL COMPLIANT ENCLOSURE

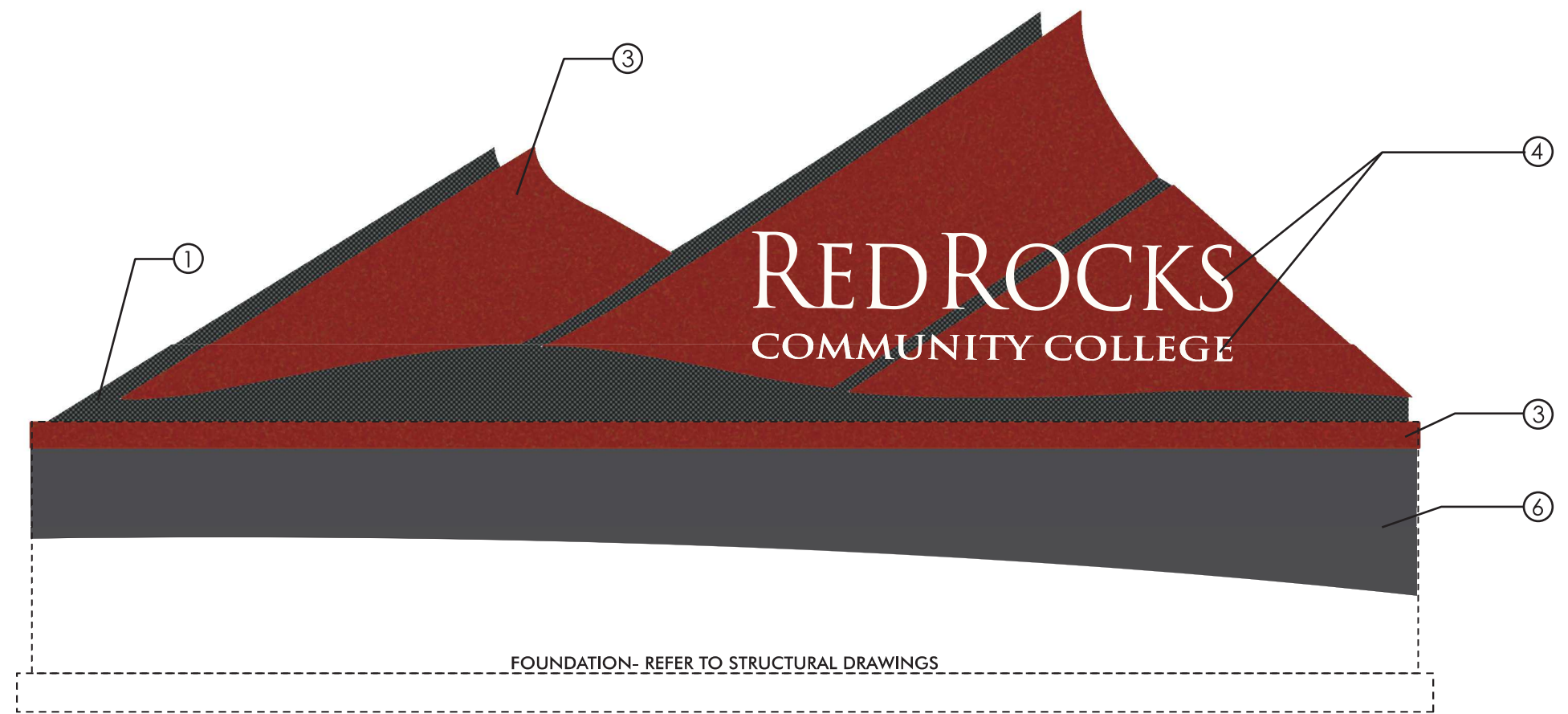
④ WHITE ALUMINUM REVERSE PAN-CHANNEL LETTERS
 FACE: 1/8" THICK ALUMINUM, PAINTED WHITE, UV CLEAR COATED
 RETURNS: 4 7/8" DEEP, .063 THICK ALUMINUM, PAINTED WHITE, UV CLEAR COATED
 BACKER LENS: .125" CLEAR POLYCARBONATE
 ILLUMINATION: BRIGHT WHITE LEDS
 MOUNTING: 1/4-20 STUD, 1 3/4" STAND-OFF SPACER TUBE

⑤ CABINETS/SOLID BACKER FOR REVERSE PAN-CHANNEL
 - 1'-0" DEEP ELECTRICAL HOUSING (CABINET) FOR REVERSE PAN CHANNEL LETTERS
 - 1/8" THICK ALUMINUM, PAINTED TO MATCH POWDURA FLINT HAS4-C0002

⑥ COLORED CONCRETE BASE
 - COLOR TO MATCH DAVIS COLORS GRAPHITE



SOUTH SIDE



EAST FACE

NOTE: ALL MATERIALS AND COLORS TO BE REVIEWED AND APPROVED BY RED ROCKS COMMUNITY COLLEGE PRIOR TO FABRICATION

① POWDER COATED, PERFORATED ALUMINUM
 - 1/8" PERFORATED ALUMINUM- PATTERN TO BE DETERMINED
 - POWDER COAT TO MATCH POWDURA FLINT HAS4-C0002

② ALUMINUM STAND-OFFS, POWDER COATED OR PAINTED
 TO MATCH POWDURA FLINT HAS4-C0002

③ ALUMINUM W/ FAUX FINISHED PAINT
 1/8" ALUMINUM, PAINTED AND UV CLEAR COATED
 *FABRICATOR TO PROVIDE 5 INITIAL SAMPLES
 1ST SET: (X5) 1'-0" X 1'-0" BASED ON SAMPLES AND IMAGES PROVIDED
 2ND SET: (X3) 1'-0" X 1'-0" BASED ON OWNER INPUT FROM FIRST SAMPLE SET

REVERSE FACE OF PANELS TO BE POPULATED WITH RED OR AMBER LEDS
 - EXACT PRODUCT TO BE DETERMINED
 - LEDS TO BE HOUSED IN A UL COMPLIANT ENCLOSURE

④ WHITE ALUMINUM REVERSE PAN-CHANNEL LETTERS
 FACE: 1/8" THICK ALUMINUM, PAINTED WHITE, UV CLEAR COATED
 RETURNS: 4 7/8" DEEP, .063 THICK ALUMINUM, PAINTED WHITE, UV CLEAR COATED
 BACKER LENS: .125" CLEAR POLYCARBONATE
 ILLUMINATION: BRIGHT WHITE LEDS
 MOUNTING: 1/4-20 STUD, 1 3/4" STAND-OFF SPACER TUBE

⑤ CABINETS/SOLID BACKER FOR REVERSE PAN-CHANNEL
 - 1'-0" DEEP ELECTRICAL HOUSING (CABINET) FOR REVERSE PAN CHANNEL LETTERS
 - 1/8" THICK ALUMINUM, PAINTED TO MATCH POWDURA FLINT HAS4-C0002

⑥ COLORED CONCRETE BASE
 - COLOR TO MATCH DAVIS COLORS GRAPHITE

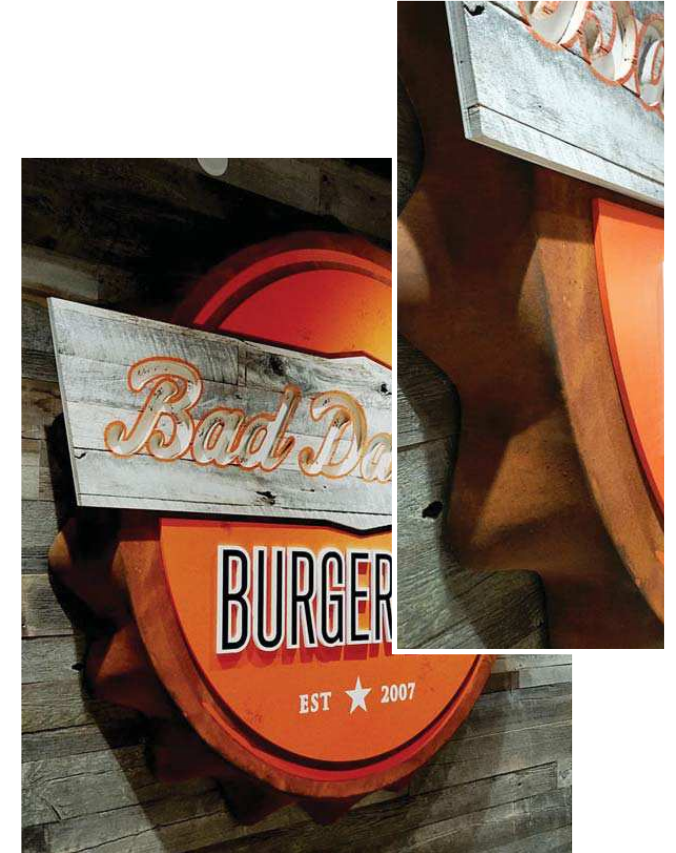


proposed finish for RRCC monument sign

4950 Washington Street



8501 W Bowles Ave, Littleton



faux paint examples in the Metro Area
note: these are not the proposed finishes for the RRCC monument

The awarded fabricator will provide several finish samples for RRCC's approval.

various faux paint examples

PREPARED BY



DAVIS
PARTNERSHIP
ARCHITECTS

2901 Blake Street, Suite #100
Denver, Colorado 80205-2303
303.861.8555 Fax 303.861.3027

PROJECT

Red Rocks Community College
Exterior Ground Sign

DRAWING

Exterior Ground Sign
Faux Finish Images

SCALE

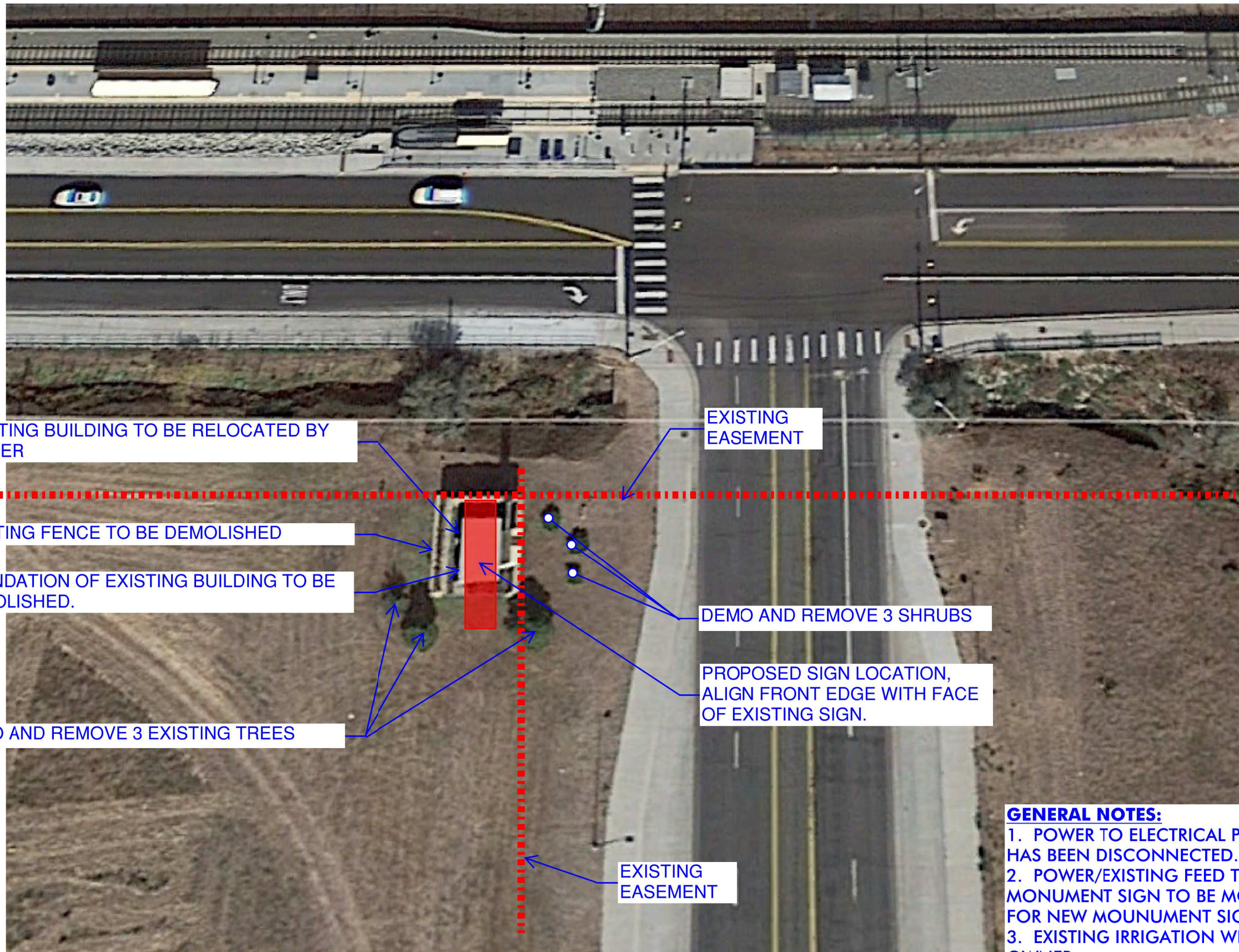
N.T.S.

ISSUE / DATE

For Construction 03.18.2016

SHEET

03



EXISTING BUILDING TO BE RELOCATED BY OWNER

EXISTING EASEMENT

EXISTING FENCE TO BE DEMOLISHED

FOUNDATION OF EXISTING BUILDING TO BE DEMOLISHED.

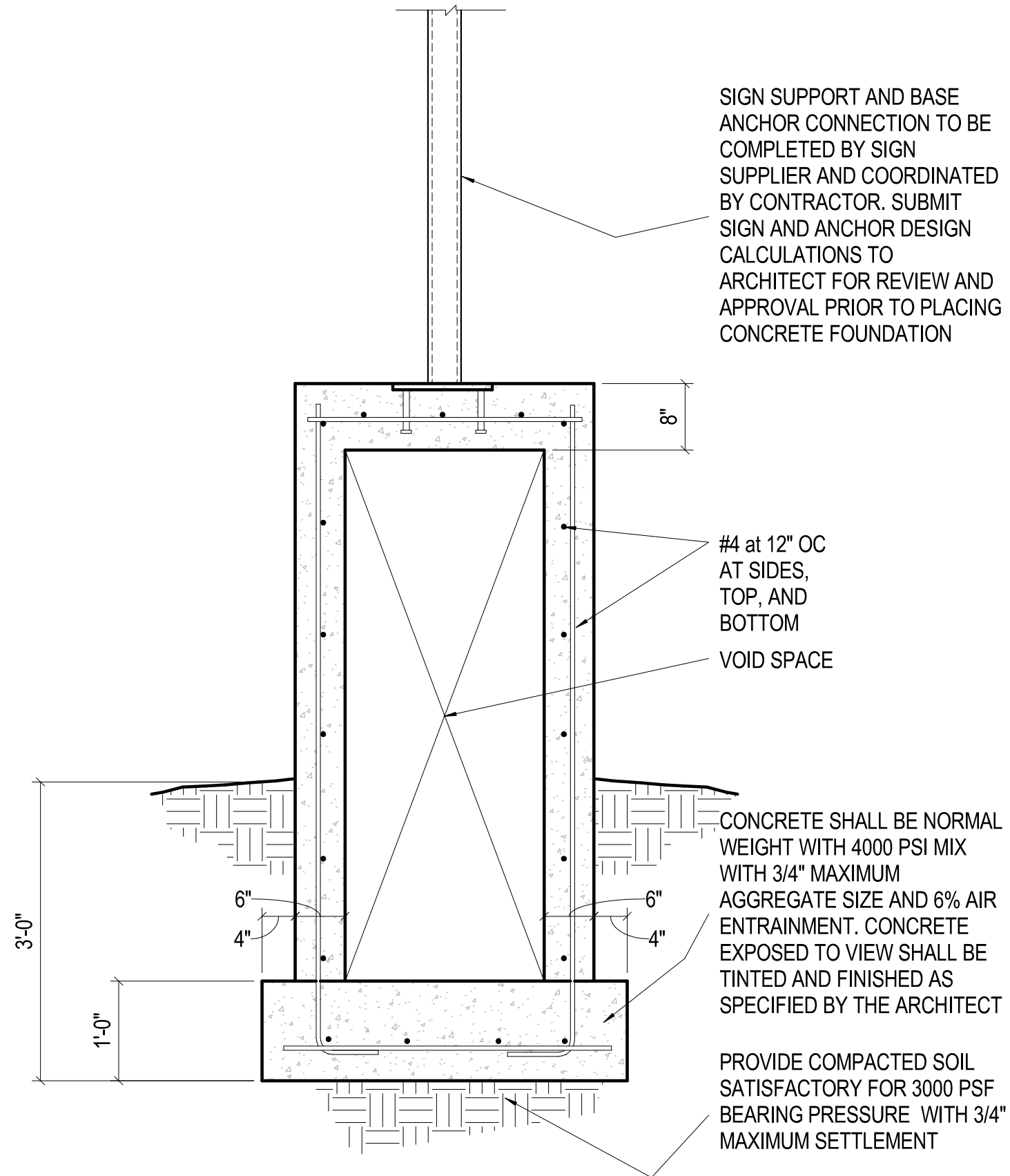
DEMO AND REMOVE 3 SHRUBS

PROPOSED SIGN LOCATION, ALIGN FRONT EDGE WITH FACE OF EXISTING SIGN.

DEMO AND REMOVE 3 EXISTING TREES

EXISTING EASEMENT

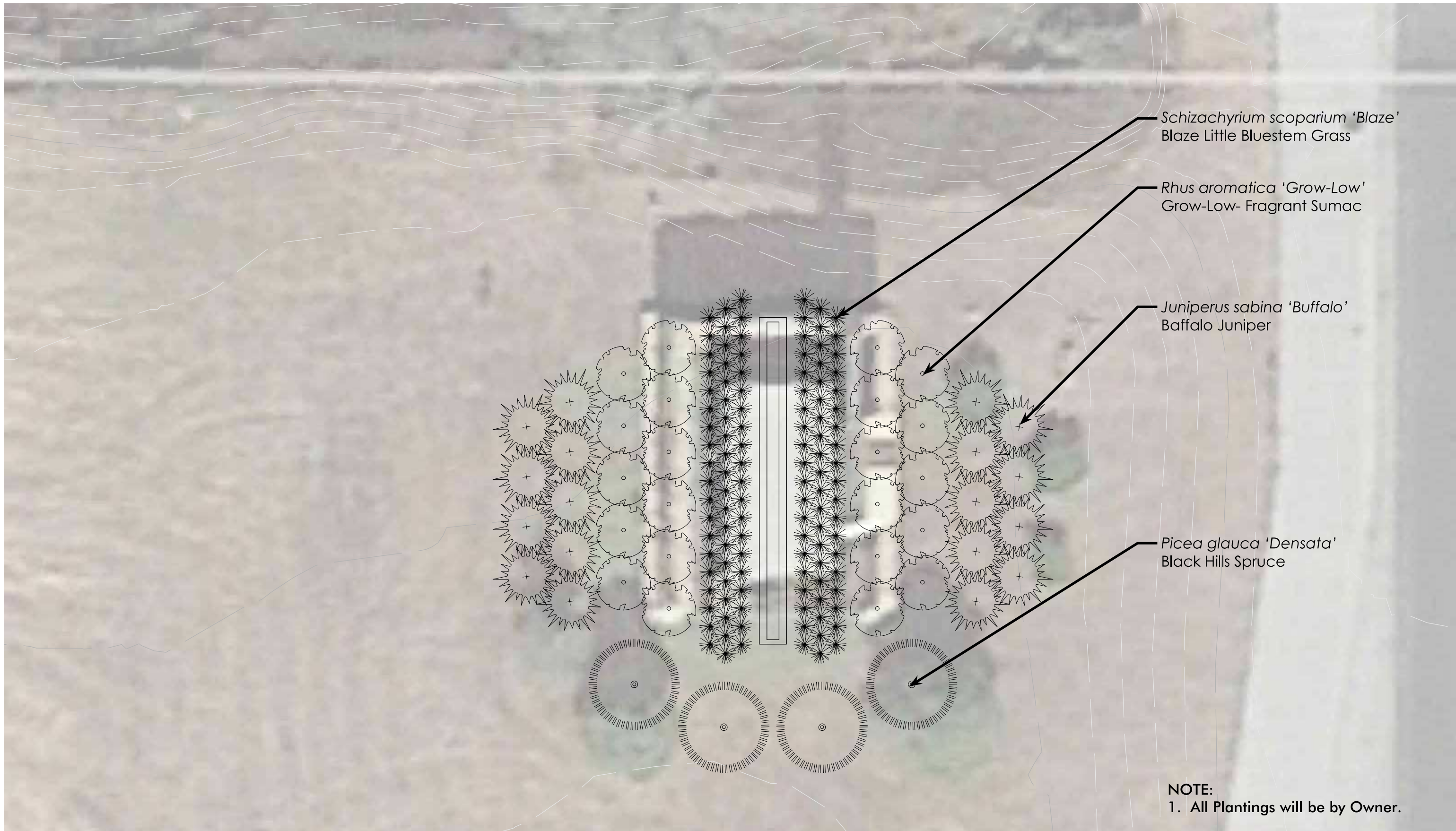
GENERAL NOTES:
 1. POWER TO ELECTRICAL PANEL ON BUILDING HAS BEEN DISCONNECTED.
 2. POWER/EXISTING FEED TO CURRENT MONUMENT SIGN TO BE MODIFIED AND REUSED FOR NEW MOUNMENT SIGN.
 3. EXISTING IRRIGATION WILL BE MODIFIED BY OWNER.



RED ROCKS COMMUNITY COLLEGE
 EXTERIOR SIGN - STRUCTURAL FOUNDATION
 DATE: 03.18.2016
 SCALE: 3/4" = 1'-0"

NOTE: THE DETAIL PROVIDED FOR THE FOUNDATION IS FOR GUIDANCE ONLY TO PROVIDE INTENT. SIGN FABRICATOR TO PROVIDE FINAL FOUNDATION DESIGN

S1



Schizachyrium scoparium 'Blaze'
Blaze Little Bluestem Grass

Rhus aromatica 'Grow-Low'
Grow-Low- Fragrant Sumac

Juniperus sabina 'Buffalo'
Buffalo Juniper

Picea glauca 'Densata'
Black Hills Spruce

NOTE:
1. All Plantings will be by Owner.

